

# Automatic Stainless Steel Wall-mounted Central Soap Dispensers SLZN 83ER2 - 83ER6

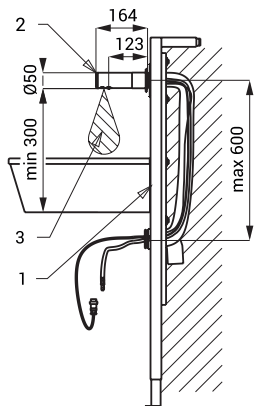


SLZN 83E

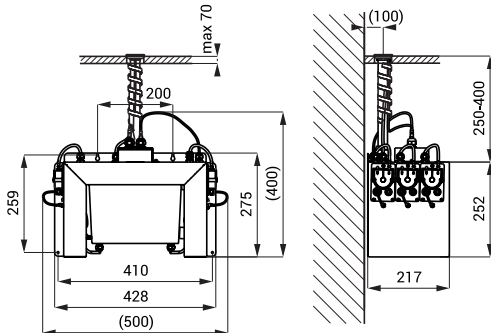
## Characteristics

- including the mounting frame SLR 24
- easy soap refilling
- soap economy
- one dose of soap is flowing as hands are in the active range of the sensor (can be set in range 1,3 - 13 s), standard 2,6 s
- possibility of delivery 2 - 6 pcs. of soap dispensers with central unit made to order
- use in the public sector; container for soap 6 l
- parameters adjustment using by the remote control SLD 03

## Installation Drawing



- 1 - mounting frame with soap supply and power supply 24 V DC in security tube
- 2 - stainless steel spout
- 3 - active range



## Technical Specification

<b>Operating voltage</b>	24 V DC
<b>Power input</b>	
SLZN 83ER2	5 W
SLZN 83ER3	7 W
SLZN 83ER4	9 W
SLZN 83ER5	12 W
SLZN 83ER6	14 W
<b>Active range</b>	0,11 - 0,15 m
<b>Recommended soap viscosity</b>	10 mPa - 5000 mPa
(don't use chemical solvents and disinfection)	

mounting frame SLR 24



central soap dispenser with soap container 6 l

## Supply Specification

<b>SLZN 83ER2 - Supply No. 85812</b>	stainless steel spout with electronics (2 pcs.), grip plate, inlet hoses and cables in a protective tube 80 cm, central soap dispenser with peristaltic pumps for liquid soap and soap container 6 l, mounting frame SLR 24 (2 pcs.), power supply SLZ 01Y, remote control SLD 03
<b>SLZN 83ER3 - Supply No. 85813</b>	stainless steel spout with electronics (3 pcs.), grip plate, inlet hoses and cables in a protective tube 80 cm, central soap dispenser with peristaltic pumps for liquid soap and soap container 6 l, mounting frame SLR 24 (3 pcs.), power supply SLZ 01Y, remote control SLD 03
<b>SLZN 83ER4 - Supply No. 85814</b>	stainless steel spout with electronics (4 pcs.), grip plate, inlet hoses and cables in a protective tube 80 cm, central soap dispenser with peristaltic pumps for liquid soap and soap container 6 l, mounting frame SLR 24 (4 pcs.), power supply SLZ 01Y, remote control SLD 03
<b>SLZN 83ER5 - Supply No. 85815</b>	stainless steel spout with electronics (5 pcs.), grip plate, inlet hoses and cables in a protective tube 80 cm, central soap dispenser with peristaltic pumps for liquid soap and soap container 6 l, mounting frame SLR 24 (5 pcs.), power supply SLZ 01Y, remote control SLD 03
<b>SLZN 83ER6 - Supply No. 85816</b>	stainless steel spout with electronics (6 pcs.), grip plate, inlet hoses and cables in a protective tube 80 cm, central soap dispenser with peristaltic pumps for liquid soap and soap container 6 l, mounting frame SLR 24 (6 pcs.), power supply SLZ 01Y, remote control SLD 03