

Coin and Token Shower Timers for Four to Eight Showers

SLZA 02N, SLZA 02NZ



SLZA 02N



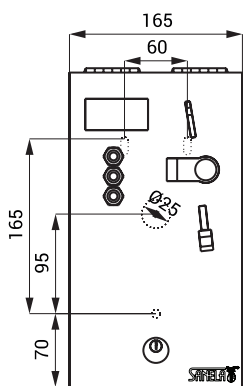
SLZA 02NZ

Characteristics

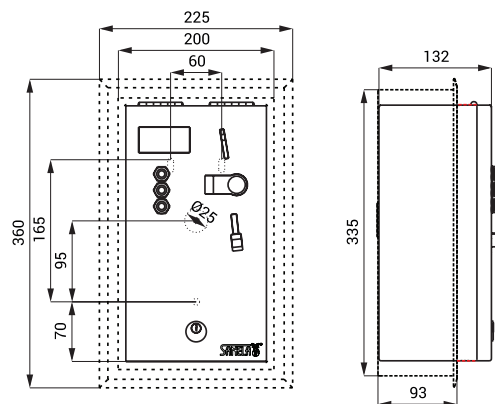


- hygienic flush
- vandal-proof
- choice of shower by the machine
 - after inserting a coin or a token the machine assigns the shower to the user and shows the number of shower on display
- interactive control
 - after inserting a coin or a token the machine starts water flow on several seconds to indicate the chosen shower
 - the user can start or stop the water flow directly in the shower
- 30 s before the end of water supply the user is warned by interrupting of water flow
- index Z - recessed
- parameters adjustment using by the remote control SLD 05 (adjustment of shower time according to the thrown coin or token, time delay of switch on, possible activation of hygienic flush, time value, current euro exchange, token value, display contrast, possibility switch off some from showers)
- marking of the buttons by symbols could be made to order
- the possibility of obtaining the statistical information, device diagnostics
- lockable
- material AISI - 304
- could be made to order from stainless steel AISI - 316L
- brushed finish

Installation Drawing



SLZA 02N



SLZA 02NZ

Technical Specification

Dimension of hole in the wall
for models with index Z

Operating voltage

Power input

Types of coins

Delay time for paid 5 CZK

335 x 200 x 125 mm

24 V DC

91 W

(depends on the accessories and the number of showers)

5, 10, 20 and 50 CZK,

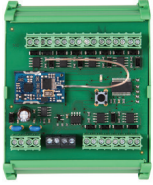
1 and 2 EUR, metal token

0 - 255 s, standard 30 s

Supply Specification

- SLZA 02N - Supply No. 88023** stainless steel coin machine with electronics, coin holder and coin box, set of keys (2 pcs.)
- SLZA 02NZ - Supply No. 88024** stainless steel coin machine with electronics, coin holder and coin box, set of keys (2 pcs.), mounting frame

Necessary Accessories



SLZA 15	88150	Valves distributor on DIN rail
SLZA 17	88170	Push buttons distributor on DIN rail



SLZA 20P	88207	Shower control with piezo button - premixed water
-----------------	--------------	--



SLZA 20PH	88208	Shower control with piezo button - for cold and hot water, temperature regulated by mixer
------------------	--------------	--



SLZA 20PT	88209	Shower control with piezo button - for cold and hot water, temperature regulated by thermostatic mixer
------------------	--------------	---



SLZA 21P	88217	Stainless steel shower panel with piezo button - premixed water
-----------------	--------------	---



SLZA 21PH	88218	Stainless steel shower panel with piezo button - for cold and hot water, temperature regulated by mixer
------------------	--------------	---



SLZA 21PT

88219

Stainless steel shower panel with piezo button - for cold and hot water, temperature regulated by thermostatic mixer

Recommended Accessories

SLZA 50	-	Supply No. 88500	set of 50 pcs. of tokens for coin machine
SLZ 01Y	-	Supply No. 05012	power supply 24 V DC for operating of max. 5 pcs. of showers
SLZ 01Z	-	Supply No. 05011	power supply 24 V DC for operating of max. 9 pcs. of showers
SLZ 04Y	-	Supply No. 05042	power supply 24 V DC for DIN rail, for operating of max. 5 pcs. of showers
SLZ 04Z	-	Supply No. 05041	power supply 24 V DC for DIN rail, for operating of max. 9 pcs. of showers
SLZ 04X	-	Supply No. 10049	power supply 24 V DC for DIN rail, for operating of max. 15 pcs. of showers
SLD 05	-	Supply No. 07050	remote control for an adjustment of parameters
SLA 03	-	Supply No. 06030	vandal-proof shower head
SLA 39	-	Supply No. 06390	vandal-proof shower head
SLA 40	-	Supply No. 06400	vandal-proof shower head with possibility to set an angle of water flow