

Stainless Steel Washbasins SLUN 65, SLUN 68

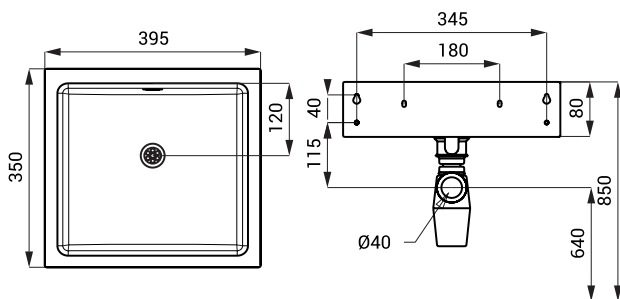


SLUN 65

Characteristics

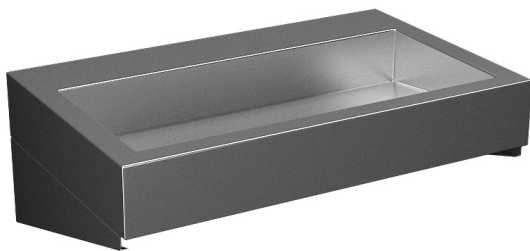
- stainless steel wall hung washbasin
- without a tap hole (could be made to order)
- overflow set
- material AISI - 304
- brushed finish

Dimensions



Supply Specification

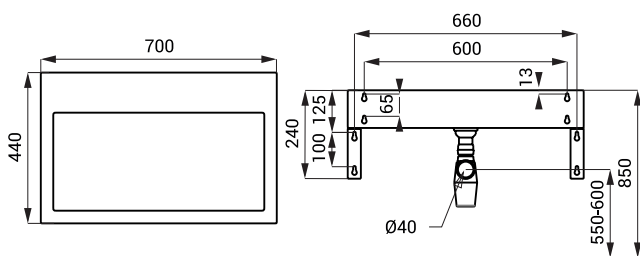
SLUN 65 - Supply No. 93650 stainless steel washbasin, overflow set, siphon, mounting set



Characteristics

- stainless steel wall hung washbasin
- only with wall-mounted tap, not possible to use tap on the washbasin
- material AISI - 304
- brushed finish

Dimensions



Supply Specification

SLUN 68 - Supply No. 93680 stainless steel washbasin, console (2 pcs.), siphon, mounting set