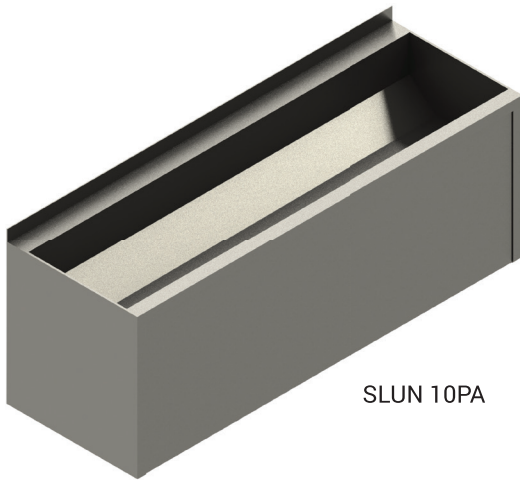


Stainless Steel Washing Trough SLUN 10PA



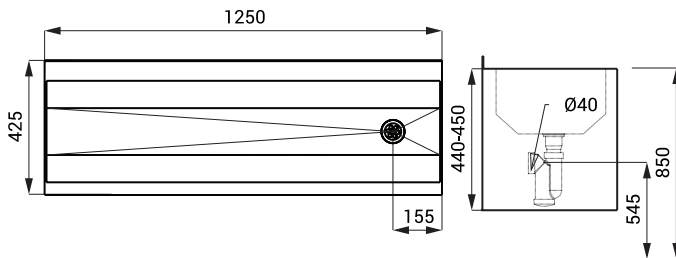
SLUN 10PA

Characteristics



- vandal-proof
- suitable for a prison
- stainless steel wall hung washing trough with a complete sheating
- rear assembling over two servis hatches
- without a tap holes (could be made to order)
- siphon hole is standardly on the right side (could be changed to order)
- different lengths could be made to order
- material AISI - 304
- brushed finish

Dimensions



Supply Specification

SLUN 10PA - Supply No. 73109 stainless steel washing trough, siphon, mounting set