

Automatic Stainless Steel Washbasin Taps with Soap Dispenser SLU 45MD, SLU 46MD

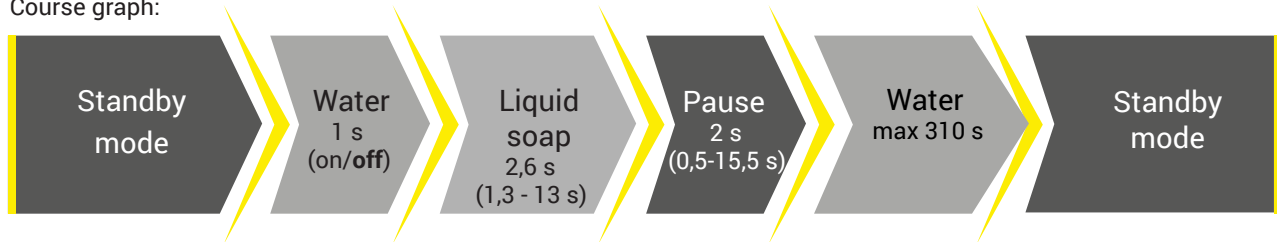


Characteristics

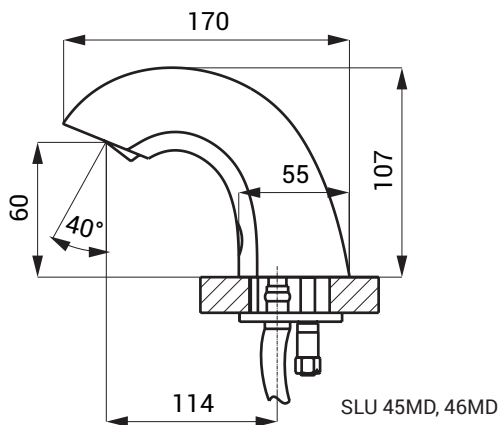


- economical aerator, rate of flow 6 l/min
- hygienic flush
- easy soap refilling
- soap economy
- SLU 45MD is destined for cold or premixed water
- SLU 46MD is destined for cold and hot water, temperature is regulated by angle valves
- suitable for private places; container for soap 1 l
- system reacts to the hands in front of the sensor
- parameter adjustment using by the remote control SLD 03

Course graph:

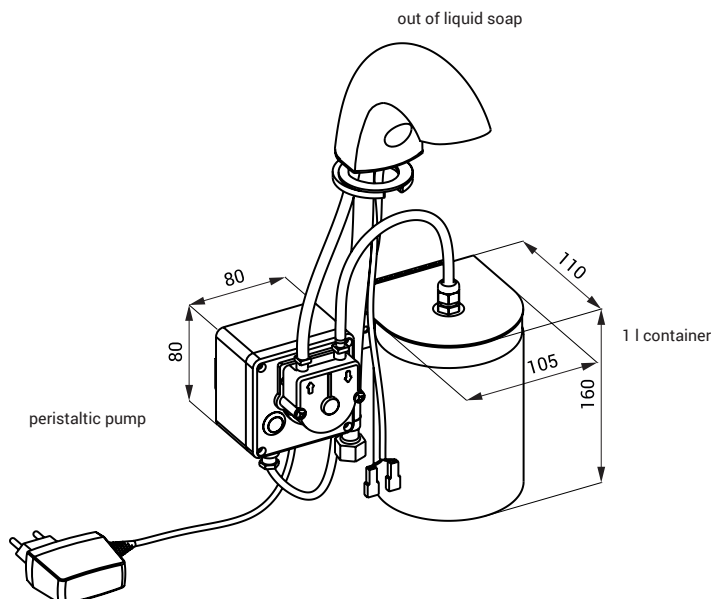


Dimensions



Technical Specification

Operating voltage	230 V AC
SLU 45MD, SLU 46MD	
Power input	7 W
Active range	0,14 - 0,2 m
Recommended flow pressure	0,1 - 0,6 MPa
Rate of flow	6 l/min. (inf. Data)
Water inlet	male thread G 1/2"
Recommended soap viscosity	10 mPa - 5000 mPa
(don't use chemical solvents and disinfection)	



Supply Specification

SLU 45MD – Supply No. 03466	faucet with an electronics, connecting hoses, angle valve with filter (1 pc.), electromagnetic valve (1 pc.), peristaltic pump for liquid soap and container for liquid soap 1 l, SLZ 07 - wall socket power supply 230 V AC/24 V DC
SLU 46MD – Supply No. 03467	faucet with an electronics, Y-piece, connecting hoses, angle valve with filter and check valve (2 pcs.), electromagnetic valve (1 pc.), peristaltic pump for liquid soap and container for liquid soap 1 l, SLZ 07 - wall socket power supply 230 V AC/24 V DC

Recommended Accessories

SLD 03 – Supply No. 07030	remote control for an adjustment of parametres
SLT 04 – Supply No. 09040	thermostatic valve 3/4", rate of flow 28 l/min by the pressure 0,1 MPa
SLT 05 – Supply No. 09050	thermostatic valve 1/2", rate of flow 42 l/min by the pressure 0,1 MPa
SLA 56A – Supply No. 06560	economical aerator 3,8 l/min
SLA 56B – Supply No. 06561	economical aerator 1,9 l/min