

# Radars Flushing Unit for Urinal O.novo (Omnia Pro) SLP 70RS

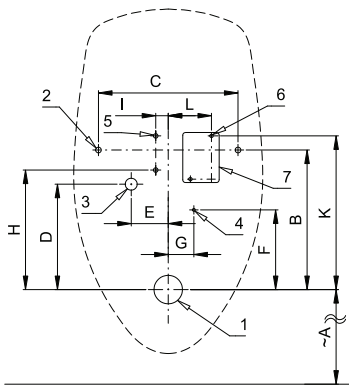


## Characteristics



- radar flushing unit for urinal O.novo (Omnia Pro) (Villeroy & Boch) No. 750700
- economy flushing by 1 liter of water
- during installation is necessary to blind additional inlet holes by silicone plugs (see the mounting instructions)
- easy installation by the help of paper drill template
- whole flushing unit is placed behind the urinal
- system reacts only on the direct use of the urinal (it analyses changes, which are proceeded inside of the urinal, when a liquid is flowing through)
- adjustable flushing time 0,5 - 15,5 s
- parameters adjustment by remote control SLD 04 without the necessity to dismantle the urinal from the wall (acoustic setting indication)
- automatic flushing after each 6 hours non-use
- monitoring of battery capacity (for models with index B)
- possibility to regulate a water flow by the ball valve
- radar flushing unit recharges a water to the siphon after each flushing

## Installation Drawing



- 1 - water outlet  $\varnothing$  50 mm
- 2 - holes for fitting
- 3 - water supply
- 4 - power supply
- 5 - holes for wall plug
- 6 - holes for wall plug
- 7 - power supply

## Technical Specification

### Operating voltage

- SLP 70RS 24 V DC
- SLP 70RZ 230 V AC/50 Hz
- SLP 70RB 6 V

### Power input

- operating by 24 V DC 8 W
- operating by 6 V 3 W

### Recommended flow pressure

0,1 - 0,6 MPa

### Rate of flow

### Water inlet

### Water outlet

18 l/min (inf. data)  
male thread G 1/2"  
inlet fitting with a rubber sealing

Illustrative photo:



Dimensions (mm)	A	B	C	D	E	F	G	H	I	K	L
SLP 70 - O.NOVO (OMNIA PRO)	390	245	245	185	65	140	45	210	22	270	76

(OMNIA PRO)

\* for the height of the front edge of the urinal 650 mm above the floor

## Supply Specification

- SLP 70RS - Supply No. 11705 radar flushing unit on the mounting rail, electromagnetic valve, silicone plug (2 pcs.), connecting hoses, angle valve with filter and check valve, inlet fitting with a rubber sealing, siphon, paper drill template, power supply (SLP 70RZ), 4 pcs. AA alkaline batteries 1,5 V, 2700 mAh with battery case (SLP 70RB)
- SLP 70RZ - Supply No. 11706
- SLP 70RB - Supply No. 11707

## Recommended Accessories

- SLZ 01Y - Supply No. 05012 power supply 24 V DC for operating of max. 5 pcs. of flushing units
- SLZ 01Z - Supply No. 05011 power supply 24 V DC for operating of max. 9 pcs. of flushing units
- SLZ 04Y - Supply No. 05042 power supply 24 V DC on DIN rail, for operating of max. 5 pcs. of flushing units
- SLZ 04Z - Supply No. 05041 power supply 24 V DC on DIN rail, for operating of max. 9 pcs. of flushing units
- SLZ 04X - Supply No. 10049 power supply 24 V DC on DIN rail, for operating of max. 15 pcs. of flushing units
- SLZ 06 - Supply No. 05060 power supply 24 V DC for operating of max. 1 pc. of flushing unit
- SLD 04 - Supply No. 07040 remote control for an adjustment of parameters
- SLA 11 - Supply No. 06110 deodorising urinal screen - orange colour, mango scent
- SLA 11A - Supply No. 06111 deodorising urinal screen - red colour, kiwi and grapefruit scent
- SLA 11B - Supply No. 06112 deodorising urinal screen - transparent colour, honeysuckle scent
- SLA 11C - Supply No. 06113 deodorising urinal screen - blue colour, cotton bloom scent
- SLR 01L - Supply No. 08015 mounting frame to the plasterboard for the urinal with radar flushing unit on the mounting rail
- SLA 36 - Supply No. 06360 set of 4 pcs. alkaline batteries AA 1,5 V, 2700 mAh (for models with index B)