

Ceramic Urinal with the Radar Flushing Unit SLP 32R

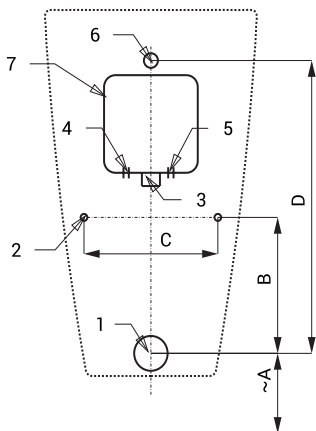


SLP 32 - ARQ WITH A COVER

Characteristics

- easy installation
- whole flushing unit is placed behind the urinal
- system reacts only on the direct use of the urinal (it analyses changes, which are proceeded inside of the urinal, when a liquid is flowing through)
- adjustable flushing time 0,5 - 15,5 s
- parameters adjustment by remote control SLD 04 without the necessity to dismantle the urinal from the wall (acoustic setting indication)
- automatic flushing after each 6 hours non-use
- possibility to regulate a water flow by the angle valve
- radar flushing unit recharges a water to the siphon after each flushing

Installation Drawing



- 1 - water outlet \varnothing 50 mm
- 2 - holes for fitting
- 3 - water supply
- 4 - power supply 230 V AC (SLP 32RZ)
- 5 - power supply 24 V DC (SLP 32R)
- 6 - inlet fitting
- 7 - mounting box

SLP 32R

| Dimensions (mm) | A | B | C | D |
|-----------------|-----|-----|-----|-----|
| SLP 32 - ARQ | 390 | 195 | 200 | 420 |

* for the height of the front edge of the urinal 650 mm above the floor

Supply Specification

- SLP 32R - Supply No. 01324 ceramic urinal with the radar flushing unit, plastic mounting box with brass screw coupling, electromagnetic valve and angle valve, inlet fitting with a rubber sealing, power supply (SLP 32RZ), 4 pcs. AA alkaline batteries 1,5 V, 2700 mAh with battery case (SLP 32RB)

Technical Specification

- Mounting box dimension** 140 x 140 x 75 mm
- Operating voltage**
- SLP 32R 24 V DC
 - SLP 32RZ 230 V AC/50 Hz
 - SLP 32RB 6 V
- Power input**
- operating by 24 V DC 8 W
 - operating by 6 V 3 W
- Recommended flow pressure** 0,1 - 0,6 MPa
- Rate of flow** 18 l/min (inf. data)
- Water inlet** male thread G 3/4"
- Water outlet** inlet fitting with a rubber sealing



SLA 11

SLA 11A

SLA 11B

SLA 11C

Recommended Accessories

- SLZ 01Y - Supply No. 05012 power supply 24 V DC for operating of max. 5 pcs. of flushing units
- SLZ 01Z - Supply No. 05011 power supply 24 V DC for operating of max. 9 pcs. of flushing units
- SLZ 04Y - Supply No. 05042 power supply 24 V DC on DIN rail, for operating of max. 5 pcs. of flushing units
- SLZ 04Z - Supply No. 05041 power supply 24 V DC on DIN rail, for operating of max. 9 pcs. of flushing units
- SLZ 04X - Supply No. 10049 power supply 24 V DC on DIN rail, for operating of max. 15 pcs. of flushing units
- SLZ 06 - Supply No. 05060 power supply 24 V DC for operating of max. 1 pc. of flushing unit
- SLD 04 - Supply No. 07040 remote control for an adjustment of parameters
- SLA 11 - Supply No. 06110 deodorising urinal screen - orange colour, mango scent
- SLA 11A - Supply No. 06111 deodorising urinal screen - red colour, kiwi and grapefruit scent
- SLA 11B - Supply No. 06112 deodorising urinal screen - transparent colour, honeysuckle scent
- SLA 11C - Supply No. 06113 deodorising urinal screen - blue colour, cotton bloom scent
- SLR 01 - Supply No. 08010 plasterboard frame for urinal with mounting box behind the urinal
- SLA 36 - Supply No. 06360 set of 4 pcs. alkaline batteries AA 1,5 V, 2700 mAh (for models with index B)