

Ceramic Urinal with the Radar Flushing Unit SLP 19S



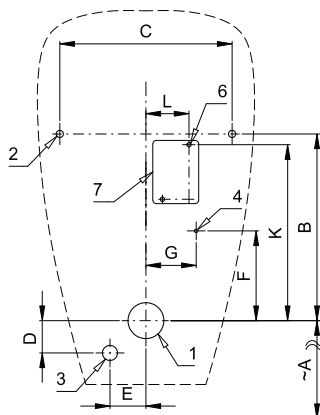
SLP 19 - GOLEM

Characteristics



- economy flushing by 1 liter of water
- easy installation
- whole flushing unit is placed behind the urinal
- system reacts only on the direct use of the urinal (it analyses changes, which are proceeded inside of the urinal, when a liquid is flowing through)
- adjustable flushing time 0,5 to 15,5 s
- parameters adjustment by remote control SLD 04 without the necessity to dismantle the urinal from the wall (acoustic setting indication)
- automatic flushing after each 6 hours non-use
- monitoring of battery capacity (for models with index B)
- possibility to regulate a water flow by the angle valve
- radar flushing unit recharges a water to the siphon after each flushing

Installation Drawing



- 1 - water outlet Ø 50 mm
2 - holes for fitting
3 - water supply
4 - power supply 24 V DC or 230 V AC
6 - holes for wall plug
7 - power supply

SLP 19

Technical Specification

Operating voltage

- SLP 19S 24 V DC
- SLP 19Z 230 V AC/50 Hz
- SLP 19B 6 V

Power input

- operating by 24 V DC 8 W
- operating by 6 V 3 W

Recommended flow pressure

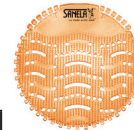
0,1 - 0,6 MPa

Rate of flow

Water inlet

Water outlet

18 l/min (inf. data)
male thread G 1/2"
inlet fitting with a rubber sealing



SLA 11



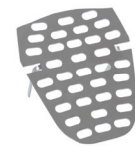
SLA 11A



SLA 11B



SLA 11C



SLA 26

Dimensions (mm)	A	B	C	D	E	F	G	K	L
SLP 19 - GOLEM	400	260	240	45	50	125	70	245	60

* for the height of the front edge of the urinal 650 mm above the floor

Supply Specification

- SLP 19S - Supply No. 01196 ceramic urinal with radar flushing unit, electromagnetic valve, connecting hoses,
SLP 19Z - Supply No. 01197 angle valve with filter and check valve, inlet fitting with a rubber sealing, siphon,
SLP 19B - Supply No. 21195 mounting set, paper drill template, power supply (SLP 19Z), 4 pcs. AA alkaline batteries 1,5 V, 2700 mAh with battery case (SLP 19B)

Recommended Accessories

- SLZ 01Y - Supply No. 05012 power supply 24 V DC for operating of max. 5 pcs. of flushing units
SLZ 01Z - Supply No. 05011 power supply 24 V DC for operating of max. 9 pcs. of flushing units
SLZ 04Y - Supply No. 05042 power supply 24 V DC on DIN rail, for operating of max. 5 pcs. of flushing units
SLZ 04Z - Supply No. 05041 power supply 24 V DC on DIN rail, for operating of max. 9 pcs. of flushing units
SLZ 04X - Supply No. 10049 power supply 24 V DC on DIN rail, for operating of max. 15 pcs. of flushing units
SLZ 06 - Supply No. 05060 power supply 24 V DC for operating of max. 1 pc. of flushing unit
SLD 04 - Supply No. 07040 remote control for an adjustment of parameters
SLA 11 - Supply No. 06110 deodorising urinal screen - orange, mango scent
SLA 11A - Supply No. 06111 deodorising urinal screen - red, kiwi and grapefruit scen
SLA 11B - Supply No. 06112 deodorising urinal screen - transparent, honeysuckle scent
SLA 11C - Supply No. 06113 deodorising urinal screen - blue, cotton bloom scent
SLA 26 - Supply No. 06260 stainless steel sieve for urinal Golem
SLR 01L - Supply No. 08015 mounting frame to the plasterboard for the urinal with radar flushing unit on the mounting rail
SLA 36 - Supply No. 06360 set of 4 pcs. alkaline batteries AA 1,5 V, 2700 mAh (for models with index B)