

Automatic Toilet Flushing Unit SLW 10NKX



SANELA 
we make water cool®

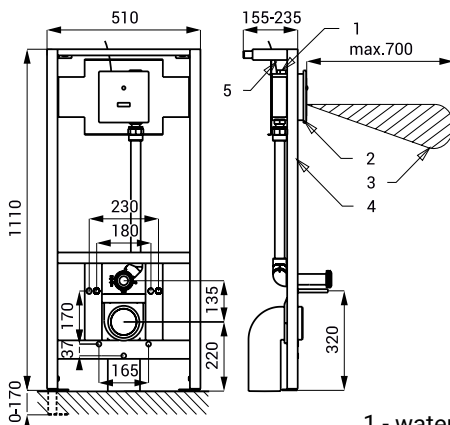


Characteristics



- includes Bluetooth control (paid Sanela Control app for download)
- including mounting frame SLR 03
- frame designed for brick partition
- five-point system for mounting stainless steel WC
- metal frame structure with blue surface finish powder coating
- mounting screws M10, waste holder with connection kit \varnothing 50 mm and waste holder with elbow \varnothing 110 mm
- is intended for pressurized water from the supply, cannot be used for toilets with cistern
- responds to the presence of a person in front of the sensor at a distance of max. 0.7 m from the sensor for longer than 7.5 s
- flushing occurs after the person leaves the monitored zone
 - “short flush” (2 s) = the presence time of a person in the monitored zone is from 7.5 s to 45 s
 - “long flush” (5 s) = the presence time of a person in the monitored zone is longer than 45 s
- the duration of the long flush is adjustable from 0.5 to 15.5 s
- possibility of additional manual flushing by electro-mechanical button (e.g. during cleaning)
- automatic flushing automatic flushing after 24 hours non-use
- parameter setting and communication with electronics via Sanela Control application (Bluetooth) or remote control SLD 03
- brushed finish

Installation Drawing



- 1 - water inlet
- 2 - stainless steel cover with electronics
- 3 - detection zone
- 4 - mounting frame SLR 03
- 5 - power supply 24 V DC

Technical Specification

Stainless steel cover dimensions	170 x 170 x 10 mm
Mounting box dimensions	150 x 150 x 100 mm
Frame dimensions	1120 - 1290 x 510 x 155 - 235 mm
Operating voltage	24 V DC
Power input	7 W
Active range	0,6 - 0,75 m
Recommended flow pressure	0.15 - 0.6 MPa
Rate of flow	70 l/min. (inf. data)
Water inlet	cross-section min. 32 mm (PN 16) external thread min. G 1"
Water outlet	outlet fitting with gasket

Supply Specification

SLW 10NKX - Supply No. 04107 stainless steel cover with electronics including Bluetooth module, stainless steel mounting box with union and with solenoid valve, outlet fitting with gasket, mounting frame SLR 03

Recommended accessories

SLZ 01Y	-	Supply No. 05012	power supply 24 V DC for operating of max. 5 pcs. of flushing units
SLZ 01Z	-	Supply No. 05011	power supply 24 V DC for operating of max. 9 pcs. of flushing units
SLZ 04Y	-	Supply No. 05042	power supply 24 V DC on DIN rail, for operating of max. 5 pcs. of flushing units
SLZ 04Z	-	Supply No. 05041	power supply 24 V DC on DIN rail, for operating of max. 9 pcs. of flushing units
SLZ 04X	-	Supply No. 10049	power supply 24 V DC on DIN rail, for operating of max. 15 pcs. of flushing units
SLD 03	-	Supply No. 07030	remote control for an adjustment of parameters
SANELA CONTROL APP			paid Sanela Control app available for download on the App Store and Google Play