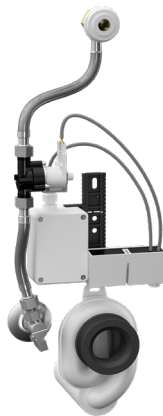
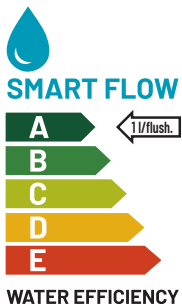


SLP 99S

SLP 99Z



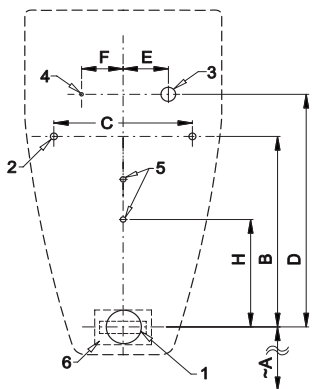
SLP 99B

## Characteristics



- DESIGNED FOR URINAL VERITY 2.0 7500 (Villeroy & Boch)
- includes Bluetooth Control (Sanela Control app available for download)
- THE URINAL DOES NOT NEED TO BE SENT FOR ASSEMBLY (RADAR UNIT IS SUPPLIED SEPARATELY)
- SLP 99S - pre-wall assembly (water inlet is provided by flexible hoses)
- SLP 99Z - 230 V AC, including power supply
- SLP 99B - 6 V, including case with 4 pcs of power supply batteries
- economical flushing with one liter of water
- the entire flushing system is located behind the urinal
- responds only to urinal use (evaluates changes, that occur inside the urinal during fluid flow)
- flushing duration is adjustable from 0.5 to 15.5 seconds
- parameter settings and communication with electronics via Sanela Control application (Bluetooth) or remote control SLD 04 without the need to dismantle the urinal (acoustic indication of setting)
- automatic flushing 6 hours after the last activation of the valve
- possibility to regulate water flow with an angle valve
- The product meets the water consumption parameters for class 1 according to the criteria of the EU Water Label program

## Dimensions



- waste pipe  $\varnothing$  50 mm
- 2 x holes for brackets
- water supply G 1/2"
- power supply 230 V AC (SLP 99Z) or 24 V DC (SLP 99S)
- 2 x hole for wall plug
- battery case (SLP 99B)

## Technical Specification

### Supply voltage

- SLP 99S: 24 V DC
- SLP 99Z: 230 V AC/50 Hz
- SLP 99B: 6 V

### Power input

- with power supply 24 V DC: 8 W
- with power supply 6 V: 3 W

### Recommended flow pressure

- Rate of flow: 0.1 - 0.6 MPa
- Water inlet: 18 l/min (inf. data)
- Water outlet: external thread G 1/2" outlet fitting with gasket

Illustrative photo:



Illustrative photo:



Dimensions (mm)	A	B	C	D	E	F	H
SLP 99 - VERITY 2.0 7500	405	275	180	305	55	70	210

\* for a front edge urinal height of 650 mm above the floor

## Supply Specification

- SLP 99S - **Supply No. 21992** radar flush including Bluetooth module on mounting rail, solenoid valve,
- SLP 99Z - **Supply No. 21994** connecting hose, angle valve, outlet fitting with gasket, trap, power supply (SLP 99Z),
- SLP 99B - **Supply No. 21996** 4 pcs AA alkaline batteries 1.5 V, 2700 mAh with case (SLP 99B)

## Recommended accessories

- SLZ 01Y - **Supply No. 05012** power supply 24 V DC for operating of max. 5 pcs. of flushing units
  - SLZ 01Z - **Supply No. 05011** power supply 24 V DC for operating of max. 9 pcs. of flushing units
  - SLZ 04Y - **Supply No. 05042** power supply 24 V DC on DIN rail, for operating of max. 5 pcs. of flushing units
  - SLZ 04Z - **Supply No. 05041** power supply 24 V DC for DIN rail, for max. 9 flushers
  - SLZ 04X - **Supply No. 10049** power supply 24 V DC on DIN rail, for operating of max. 15 pcs. of flushing units
  - SLZ 06 - **Supply No. 05060** power supply 24 V DC for operating of max. 1 pc. of flushing unit
  - SLD 04 - **Supply No. 07040** remote control for an adjustment of parameters
  - SLA 11 - **Supply No. 06110** urinal fragrance screen - orange colour, mango scent
  - SLA 11A - **Supply No. 06111** urinal fragrance screen - red, kiwi grapefruit scent
  - SLA 11B - **Supply No. 06112** urinal fragrance screen - transparent, honeysuckle scent
  - SLA 11C - **Supply No. 06113** urinal fragrance screen - blue, cotton flower scent
  - SLR 09 - **Supply No. 08090** mounting frame for ceramic urinals with flusher in the urinal or for ceramic washbasins
  - SLA 36 - **Supply No. 06360** set of 4 pcs AA alkaline batteries, 1.5 V, 2700 mAh (for models with index B)
- SANELA CONTROL APP** paid Sanela Control app available for download on the App Store and Google Play



SLA 11



SLA 11A



SLA 11B



SLA 11C