

Radar Flushing Unit for Urinal TULIP (Duravit) 281730 SLP 99



SANELA
we make water cool®



SLP 99S

SLP 99Z



SLP 99B

Characteristics



- **DESIGNED FOR URINAL TULIP (Duravit) 281730**
- **includes Bluetooth control**
(paid Sanela Control app available for download)
- **THE URINAL DOES NOT HAVE TO BE SENT FOR ASSEMBLY**
(THE RADAR SENSOR IS SUPPLIED SEPARATELY)
- SLP 99S - 24 V DC, pre-wall mounting
(water supply with flexi hoses)
- SLP 99Z - 230 V AC, including power supply unit
- SLP 99B - 6 V, including housing with 4 pc AA batteries
- easy installation by the help of paper drill template
- economy flushing by 1 liter of water
- whole flushing unit is placed behind the urinal
- system reacts only on the direct use of the urinal
(it analyses changes, which are proceeded inside of the urinal, when a liquid is flowing through)
- adjustable flushing time 0,5 - 15,5 s
- parameter setting and communication with the electronics via the Sanela Control app (Bluetooth) or the SLD 04 remote control (acoustic indication of setting) without dismantling the urinal
- automatic flushing after each 6 hours non-use
- possibility to regulate a water flow by the angle valve
- radar flushing unit recharges a water to the siphon after each flushing

Technical Specification

Operating voltage

- SLP 99S 24 V DC
- SLP 99Z 230 V AC/50 Hz
- SLP 99B 6 V

Power input

- operating by 24 V DC 8 W
- operating by 6 V 3 W

Recommended flow pressure

0,1 - 0,6 MPa

Rate of flow

18 l/min (inf. data)

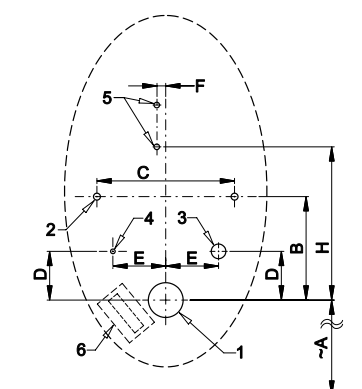
Water inlet

male thread G 1/2"

Water outlet

female thread G 1/2"

Installation Drawing



- 1 - water outlet Ø 50 mm
- 2 - 2 x holes for fitting
- 3 - water supply G 1/2"
- 4 - power supply 24 V DC (SLP 99S)
or 230 V AC (SLP 99Z)
- 5 - 2 x holes for wall plug Ø 8 mm
- 6 - power supply or battery case

Illustrative photo:



281730



SLA 11



SLA 11A



SLA 11B



SLA 11C

| Dimensions (mm) | A | B | C | D | E | F | H |
|-----------------|-----|-----|-----|----|----|----|-----|
| SLP 99 - TULIP | 475 | 135 | 160 | 60 | 70 | 10 | 205 |

* for the height of the front edge of the urinal 650 mm above the floor

Radar Urinal Flushing Units

Supply Specification

| | | | |
|---------|---|------------------|---|
| SLP 99S | - | Supply No. 21992 | radar flushing unit including Bluetooth module on the mounting rail, electromagnetic valve, |
| SLP 99Z | - | Supply No. 21994 | connecting hoses, angle valve, inlet fitting with a rubber sealing, siphon, power supply |
| SLP 99B | - | Supply No. 21996 | (SLP 99Z), 4 pcs. AA alkaline batteries 1,5 V, 2700 mAh with battery case (SLP 99B) |

Recommended Accessories

| | | | |
|--------------------|---|------------------|---|
| SLZ 01Y | - | Supply No. 05012 | power supply 24 V DC for operating of max. 5 pcs. of flushing units |
| SLZ 01Z | - | Supply No. 05011 | power supply 24 V DC for operating of max. 9 pcs. of flushing units |
| SLZ 04Y | - | Supply No. 05042 | power supply 24 V DC on DIN rail, for operating of max. 5 pcs. of flushing units |
| SLZ 04Z | - | Supply No. 05041 | power supply 24 V DC on DIN rail, for operating of max. 9 pcs. of flushing units |
| SLZ 04X | - | Supply No. 10049 | power supply 24 V DC on DIN rail, for operating of max. 15 pcs. of flushing units |
| SLZ 06 | - | Supply No. 05060 | power supply 24 V DC for operating of max. 1 pc. of flushing unit |
| SLD 04 | - | Supply No. 07040 | remote control for an adjustment of parameters |
| SLA 11 | - | Supply No. 06110 | deodorising urinal screen - orange colour, mango scent |
| SLA 11A | - | Supply No. 06111 | deodorising urinal screen - red colour, kiwi and grapefruit scent |
| SLA 11B | - | Supply No. 06112 | deodorising urinal screen - transparent colour, honeysuckle scent |
| SLA 11C | - | Supply No. 06113 | deodorising urinal screen - blue colour, cotton bloom scent |
| SLA 36 | - | Supply No. 06360 | set of 4 pcs. alkaline batteries AA 1,5 V, 2700 mAh (for models with index B) |
| SANELA CONTROL APP | | | paid Sanela Control app available for download on the App Store and Play Store |