

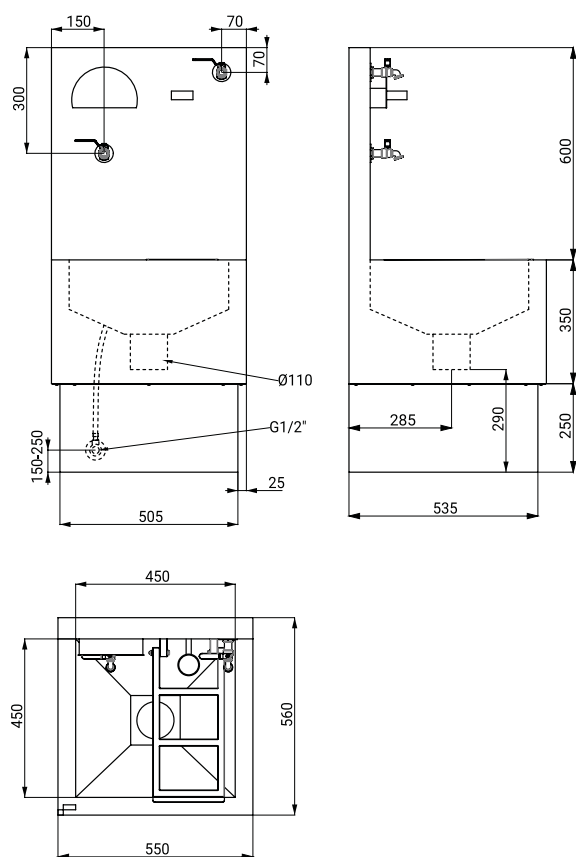
Stainless Steel Sink for Emptying Portable Toilets SLVN 07



Characteristics

- self-supported sink for emptying portable toilets
- hose for rinsing the waste-holding tank, filling tap for flush-water tank, hinged grid
- without siphon, waste outlet Ø 110 mm
- floor standing, mounting to the wall
- material AISI - 304
- brushed finish

Dimensions



Technical Specification

Dimensions

560 x 550 x 1200 mm

Supply Specification

SLVN 07 - Supply No. 98070

stainless steel sink, hinged grid, hose for rinsing the waste-holding tank, filling tap for flush-water tank