

Radar Flushing Unit for Urinal COMMUNITY 31x35 (GSI) SLP 99



SANELA
we make water cool®



SLP 99S

SLP 99Z



SLP 99B

Characteristics



- DESIGNED FOR URINAL COMMUNITY 31x35 (GSI) 909811, 909826, 909817, 909809, 909711, 909726, 909717, 909709
- includes Bluetooth control (Sanela Control app available for download)
- THE URINAL DOES NOT HAVE TO BE SENT FOR ASSEMBLY (THE RADAR SENSOR IS SUPPLIED SEPARATELY)
- SLP 99S - 24 V DC, pre-wall mounting (water supply with flexi hoses)
- SLP 99Z - 230 V AC, including power supply unit
- SLP 99B - 6 V, including housing with 4 pc AA batteries
- economy flushing by 1 liter of water
- whole flushing unit is placed behind the urinal
- system reacts only on the direct use of the urinal (it analyses changes, which are proceeded inside of the urinal, when a liquid is flowing through)
- adjustable flushing time 0,5 - 15,5 s
- parameter setting and communication with the electronics via the Sanela Control app (Bluetooth) or the SLD 04 remote control (acoustic indication of setting) without dismantling the urinal
- automatic flushing after each 6 hours non-use
- possibility to regulate a water flow by the angle valve



SLA 11



SLA 11A

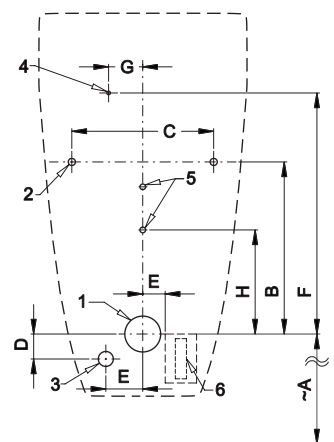


SLA 11B



SLA 11C

Installation Drawing



- 1 - water outlet Ø 50 mm
- 2 - 2 x holes for fitting
- 3 - water supply G 1/2"
- 4 - power supply 230 V AC (SLP 99Z) or 24 V DC (SLP 99S)
- 5 - 2 x holes for wall plug
- 6 - battery case (SLP 99B)

Technical Specification

Operating voltage

- SLP 99S 24 V DC
- SLP 99Z 230 V AC/50 Hz
- SLP 99B 6 V

Power input

- operating by 24 V DC 8 W
- operating by 6 V 3 W

Recommended flow pressure

- Rate of flow 0,1 - 0,6 MPa
- Water inlet 18 l/min (inf. data)
- inlet fitting with a rubber sealing

Illustrative photo:

Illustrative photo:



Dimensions (mm)	A	B	C	D	E	F	G	H
SLP 99 - COMMUNITY 31x35	450	260	240	50	60	340	50	215

* for the height of the front edge of the urinal 650 mm above the floor

Radar Urinal Flushing Units

Supply Specification

SLP 99S	-	Supply No. 21992	radar flushing unit including Bluetooth module on the mounting rail, electromagnetic valve,
SLP 99Z	-	Supply No. 21994	connecting hoses, angle valve, inlet fitting with a rubber sealing, siphon, power supply
SLP 99B	-	Supply No. 21996	(SLP 99Z), 4 pcs. AA alkaline batteries 1,5 V, 2700 mAh with battery case (SLP 99B)

Recommended Accessories

SLZ 01Y	-	Supply No. 05012	power supply 24 V DC for operating of max. 5 pcs. of flushing units
SLZ 01Z	-	Supply No. 05011	power supply 24 V DC for operating of max. 9 pcs. of flushing units
SLZ 04Y	-	Supply No. 05042	power supply 24 V DC on DIN rail, for operating of max. 5 pcs. of flushing units
SLZ 04Z	-	Supply No. 05041	power supply 24 V DC on DIN rail, for operating of max. 9 pcs. of flushing units
SLZ 04X	-	Supply No. 10049	power supply 24 V DC on DIN rail, for operating of max. 15 pcs. of flushing units
SLZ 06	-	Supply No. 05060	power supply 24 V DC for operating of max. 1 pc. of flushing unit
SLD 04	-	Supply No. 07040	remote control for an adjustment of parameters
SLA 11	-	Supply No. 06110	deodorising urinal screen - orange colour, mango scent
SLA 11A	-	Supply No. 06111	deodorising urinal screen - red colour, kiwi and grapefruit scent
SLA 11B	-	Supply No. 06112	deodorising urinal screen - transparent colour, honeysuckle scent
SLA 11C	-	Supply No. 06113	deodorising urinal screen - blue colour, cotton bloom scent
SLR 09	-	Supply No. 08090	mounting frame for ceramic urinals with built-in flush or for ceramic washbasins
SLA 36	-	Supply No. 06360	set of 4 pcs. alkaline batteries AA 1,5 V, 2700 mAh (for models with index B)
SANELA CONTROL APP			available for download on the App Store and Play Store