

Radar Flushing Unit for Urinal SLOT (Cielo) 13407 SLP 99

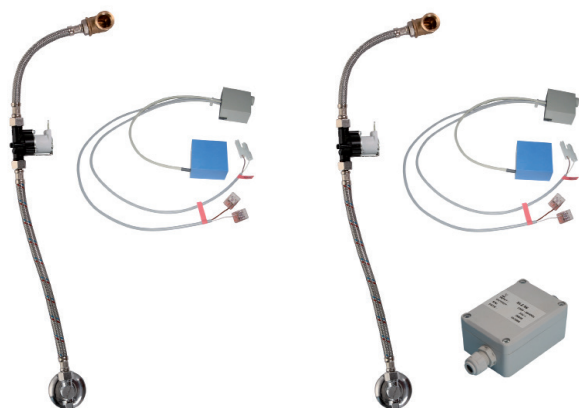


SANELA
we make water cool®



Characteristics

- **DESIGNED FOR URINAL SLOT (Cielo) 13407**
 - includes Bluetooth control (Sanela Control app available for download)
 - **THE URINAL MUST BE SENT FOR ASSEMBLY (THE RADAR SENSOR IS GLUED ON THE BACKSIDE OF THE URINAL)**
 - SLP 99RS - 24 V DC, pre-wall mounting (water supply with flexi hoses)
 - SLP 99RZ - 230 V AC, including power supply unit
 - SLP 99RB - 6 V, including housing with 4 pc AA batteries
 - economy flushing by 1 liter of water
 - whole flushing unit is placed behind the urinal
 - system reacts only on the direct use of the urinal (it analyses changes, which are proceeded inside of the urinal, when a liquid is flowing through)
 - adjustable flushing time 0,5 - 15,5 s
 - parameter setting and communication with the electronics via the Sanela Control app (Bluetooth) or the SLD 04 remote control (acoustic indication of setting) without dismantling the urinal
 - automatic flushing after each 6 hours non-use
 - possibility to regulate a water flow by the angle valve
 - radar flushing unit recharges a water to the siphon after each flushing
- the urinal must be sent for assembly (the radar sensor is glued on the backside of the urinal)



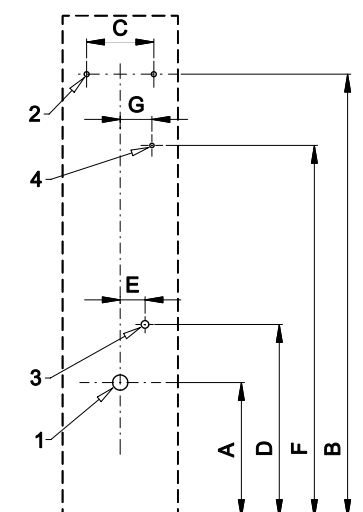
SLP 99RS

SLP 99RZ



SLP 99RB

Installation Drawing



- 1 - water outlet Ø 50 mm
- 2 - 2 x holes for fitting
- 3 - water supply G 1/2"
- 4 - power supply 24 V DC (SLP 99RS) or 230 V AC (SLP 99RZ)
- 5 - 2 x holes for wall plug Ø 8 mm
- 6 - battery case (SLP 99RB)

Dimensions (mm)	A	B	C	D	E	F	G
SLP 99 - SLOT	355	1380	180	520	65	1100	80

* for the height of the front edge of the urinal 575 mm above the floor

Technical Specification

Operating voltage

- SLP 99RS 24 V DC
- SLP 99RZ 230 V AC/50 Hz
- SLP 99RB 6 V

Power input

- operating by 24 V DC 8 W
- operating by 6 V 3 W

Recommended flow pressure

0,1 - 0,6 MPa

18 l/min (inf. data)

Water inlet

male thread G 1/2"

Water outlet

female thread G 1/2"

Illustrative photo:



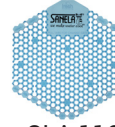
SLA 11



SLA 11A



SLA 11B



SLA 11C

Radar Urinal Flushing Units

Supply Specification

SLP 99RS	- Supply No. 11995	radar flushing unit including Bluetooth module glued, solenoid valve, coupling hoses,
SLP 99RZ	- Supply No. 01995	angle valve, inlet fitting, power supply (SLP 99RZ), 4 pcs. AA alkaline batteries
SLP 99RB	- Supply No. 11997	1,5 V, 2700 mAh with battery case (SLP 99RB)

Recommended Accessories

SLZ 01Y	- Supply No. 05012	power supply 24 V DC for operating of max. 5 pcs. of flushing units
SLZ 01Z	- Supply No. 05011	power supply 24 V DC for operating of max. 9 pcs. of flushing units
SLZ 04Y	- Supply No. 05042	power supply 24 V DC on DIN rail, for operating of max. 5 pcs. of flushing units
SLZ 04Z	- Supply No. 05041	power supply 24 V DC on DIN rail, for operating of max. 9 pcs. of flushing units
SLZ 04X	- Supply No. 10049	power supply 24 V DC on DIN rail, for operating of max. 15 pcs. of flushing units
SLZ 06	- Supply No. 05060	power supply 24 V DC for operating of max. 1 pc. of flushing unit
SLD 04	- Supply No. 07040	remote control for an adjustment of parameters
SLA 11	- Supply No. 06110	deodorising urinal screen - orange colour, mango scent
SLA 11A	- Supply No. 06111	deodorising urinal screen - red colour, kiwi and grapefruit scent
SLA 11B	- Supply No. 06112	deodorising urinal screen - transparent colour, honeysuckle scent
SLA 11C	- Supply No. 06113	deodorising urinal screen - blue colour, cotton bloom scent
SLR 09	- Supply No. 08090	mounting frame for ceramic urinals with built-in flush or for ceramic washbasins
SLA 36	- Supply No. 06360	set of 4 pcs. alkaline batteries AA 1,5 V, 2700 mAh (for models with index B)
SANELA CONTROL APP		available for download on the App Store and Play Store