

## Automatic Washbasin Taps rose gold COLOR ELITE LINE - SLU 57F, SLU 57FX



**SANELA**  
we make water cool®



rose gold  
SLU 57F



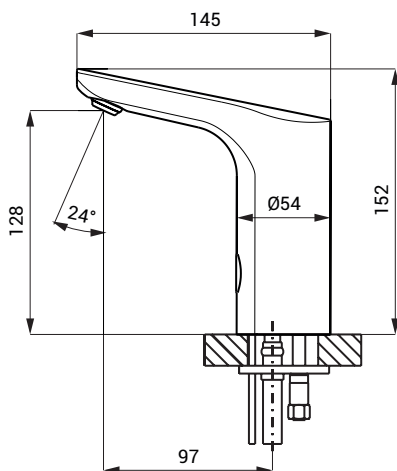
rose gold matt  
SLU 57FX

### Characteristics



- includes Bluetooth control (paid Sanela Control app available for download)
- economical aerator, rate of flow 6 l/min
- hygienic flush
- durable PVD surface finish
- is destined for cold and hot water, temperature is regulated by angle valves
- water is flowing as long as hands are in the active range
- water stops flowing after removal of hands from the active range of sensor after adjustable time delay (can be set in range 0,25 – 7,75 s)
- function of automatic water stop after 5 minut of continuous flow
- monitoring of battery capacity (for models with index B)
- START/STOP program
- parameter setting and communication with the electronics via the Sanela Control app (Bluetooth) or SLD 03

### Dimensions



### Technical Specification

<b>Dimensions</b>	152 x 145 mm
<b>Weight</b>	
▪ SLU 57F, SLU 57FX	1,74 kg
▪ SLU 57FB, SLU 57FXB	1,86 kg
<b>Operating voltage</b>	
▪ SLU 57F, SLU 57FX	24 V DC
▪ SLU 57FB, SLU 57FXB	6 V
<b>Power input</b>	
▪ operating by 24 V DC	7 W
▪ operating by 6 V	3 W
<b>Battery life</b>	
▪ 4 ks AA alkaline batteries 1,5 V, 2700 mAh	approx. 2 years (100 uses per day)
<b>Active range</b>	
▪ standard	0,13 - 0,19 m
▪ START/STOP program	0,05 - 0,15 m
<b>Recommended flow pressure</b>	0,1 - 0,6 MPa
<b>Rate of flow</b>	6 l/min. (inf. data)
<b>Water inlet</b>	male thread G 1/2"

### Supply Specification

SLU 57F - Supply No. 13570	faucet with an electronics, electromagnetic valve (1 pc.), Y-piece, connecting hoses,
SLU 57FX - Supply No. 13571	angle valve with filter and check valve (2 pcs.)
SLU 57FB - Supply No. 13576	faucet with an electronics, electromagnetic valve (1 pc.), Y-piece, connecting hoses,
SLU 57FXB - Supply No. 13577	angle valve with filter and check valve (2 pcs.), 4 pcs. AA alkaline batteries 1,5 V, 2700 mAh with battery case

## Recommended Accessories

SLZ 01Y	-	Supply No. 05012	power supply 24 V DC for operating of max. 5 pcs. of washbasin taps
SLZ 01Z	-	Supply No. 05011	power supply 24 V DC for operating of max. 9 pcs. of washbasin taps
SLZ 04Y	-	Supply No. 05042	power supply 24 V DC for DIN rail, for operating of max. 5 pcs. of washbasin taps
SLZ 04Z	-	Supply No. 05041	power supply 24 V DC for DIN rail, for operating of max. 9 pcs. of washbasin taps
SLZ 04X	-	Supply No. 10049	power supply 24 V DC for DIN rail, for operating of max. 15 pcs. of washbasin taps
SLZ 06	-	Supply No. 05060	power supply 24 V DC for operating of max. 1 pc. of washbasin tap
SLD 03	-	Supply No. 07030	remote control for an adjustment of parameters
SLT 05	-	Supply No. 09050	thermostatic valve 1/2", rate of flow 42 l/min by the pressure 0,1 MPa
SLA 36	-	Supply No. 06360	set of 4 pcs. alkaline batteries AA, 1,5 V, 2700 mAh (for models with index B)
SLA 55A	-	Supply No. 06550	economical aerator 3,8 l/min
SLA 55B	-	Supply No. 06551	economical aerator 1,9 l/min
APLIKACE SANELA CONTROL			paid Sanela Control App available for download on the App Store and Google Play