

Radar Flushing Unit for Urinal NUVOLA (Azzura) nuv 100 or SLP 99



Characteristics



- DESIGNED FOR URINAL NUVOLA (Azzura) nuv 100 or
- includes Bluetooth control (Sanela Control app available for download)
- THE URINAL DOES NOT HAVE TO BE SENT FOR ASSEMBLY (THE RADAR SENSOR IS SUPPLIED SEPARATELY)
- SLP 99S - 24 V DC, the product includes a installation box with outlet fitting, it must be embedded in the wall in the space behind the urinal
- SLP 99Z - 230 V AC, including power supply unit
- SLP 99B - 6 V, including housing with 4 pc AA batteries
- economy flushing by 1 liter of water
- whole flushing unit is placed behind the urinal
- system reacts only on the direct use of the urinal (it analyses changes, which are proceeded inside of the urinal, when a liquid is flowing through)
- adjustable flushing time 0,5 - 15,5 s
- parameter setting and communication with the electronics via the Sanela Control app (Bluetooth) or the SLD 04 remote control (acoustic indication of setting) without dismantling the urinal
- automatic flushing after each 6 hours non-use
- possibility to regulate a water flow by the angle valve
- radar flushing unit recharges a water to the siphon after each flushing



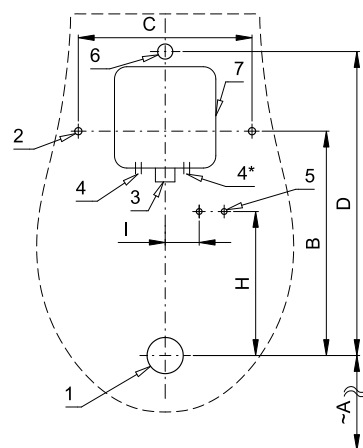
SLP 99S

SLP 99Z



SLP 99B

Installation Drawing



- 1 - water outlet \varnothing 50 mm
- 2 - 2 x holes for fitting
- 3 - water supply G 1/2"
- 4 - power supply 24 V DC (SLP 99S) or 230 V AC (SLP 99Z)
- 5 - 2 x holes for wall plug \varnothing 8 mm
- 6 - inlet fitting with a rubber sealing
- 7 - mounting box with fittings and valve

Dimensions (mm)	A	B	C	D	H	I
SLP 99 - AZZURA	590	310	240	420	199	47

* for the height of the front edge of the urinal 650 mm above the floor

Technical Specification

Mounting box dimensions	140 x 140 x 75 mm
Operating voltage	
▪ SLP 99S	24 V DC
▪ SLP 99Z	230 V AC/50 Hz
▪ SLP 99B	6 V
Power input	
▪ operating by 24 V DC	8 W
▪ operating by 6 V	3 W
Recommended flow pressure	0,1 - 0,6 MPa
Rate of flow	18 l/min (inf. data)
Water inlet	male thread G 3/4"
Water outlet	inlet fitting with a rubber sealing

Illustrative photo:



SLA 11



SLA 11A



SLA 11B



SLA 11C

Supply Specification

SLP 99S	-	Supply No. 21992	radar flushing unit including Bluetooth module on the mounting rail, mounting box
SLP 99Z	-	Supply No. 21994	with inlet fitting, rubber sealing and electromagnetic valve, siphon, power supply (SLP 99Z),
SLP 99B	-	Supply No. 21996	4 pcs. AA alkaline batteries 1,5 V, 2700 mAh (SLP 99B)

Recommended Accessories

SLZ 01Y	-	Supply No. 05012	power supply 24 V DC for operating of max. 5 pcs. of flushing units
SLZ 01Z	-	Supply No. 05011	power supply 24 V DC for operating of max. 9 pcs. of flushing units
SLZ 04Y	-	Supply No. 05042	power supply 24 V DC on DIN rail, for operating of max. 5 pcs. of flushing units
SLZ 04Z	-	Supply No. 05041	power supply 24 V DC on DIN rail, for operating of max. 9 pcs. of flushing units
SLZ 04X	-	Supply No. 10049	power supply 24 V DC on DIN rail, for operating of max. 15 pcs. of flushing units
SLZ 06	-	Supply No. 05060	power supply 24 V DC for operating of max. 1 pc. of flushing unit
SLD 04	-	Supply No. 07040	remote control for an adjustment of parameters
SLA 11	-	Supply No. 06110	deodorising urinal screen - orange colour, mango scent
SLA 11A	-	Supply No. 06111	deodorising urinal screen - red colour, kiwi and grapefruit scent
SLA 11B	-	Supply No. 06112	deodorising urinal screen - transparent colour, honeysuckle scent
SLA 11C	-	Supply No. 06113	deodorising urinal screen - blue colour, cotton bloom scent
SLA 36	-	Supply No. 06360	set of 4 pcs. alkaline batteries AA 1,5 V, 2700 mAh (for models with index B)
SANELA CONTROL APP			available for download on the App Store and Play Store