

# Radar Flushing Unit for Urinal SMYLE (Geberit) 500.254.01.1 SLP 99



**SANELA**  
we make water cool®



SLP 99S

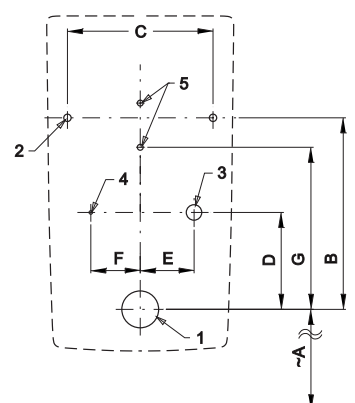
SLP 99Z

## Characteristics



- **DESIGNED FOR URINAL SMYLE (Geberit) 500.254.01.1**
- includes Bluetooth control (Sanela Control app available for download)
- **THE URINAL DOES NOT HAVE TO BE SENT FOR ASSEMBLY (THE RADAR SENSOR IS SUPPLIED SEPARATELY)**
- easy installation by the help of paper drill template
- economy flushing by 1 liter of water
- whole flushing unit is placed behind the urinal
- system reacts only on the direct use of the urinal (it analyses changes, which are proceeded inside of the urinal, when a liquid is flowing through)
- adjustable flushing time 0,5 - 15,5 s
- parameter setting and communication with the electronics via the Sanela Control app (Bluetooth) or the SLD 04 remote control (acoustic indication of setting) without dismantling the urinal
- automatic flushing after each 6 hours non-use
- possibility to regulate a water flow by the angle valve
- radar flushing unit recharges a water to the siphon after each flushing

## Installation Drawing



- 1 - water outlet Ø 50 mm
- 2 - 2 x holes for fitting
- 3 - water supply G 1/2"
- 4 - power supply 24 V DC or 230 V AC
- 5 - 2 x holes for wall plug

Dimensions (mm)	A	B	C	D	E	F	G
SLP 99 - SMYLE	420	310	250	160	85	85	260

\* for the height of the front edge of the urinal 650 mm above the floor

## Technical Specification

### Operating voltage

- SLP 99S 24 V DC
- SLP 99Z 230 V AC/50 Hz

### Power input

- operating by 24 V DC 8 W

### Recommended flow pressure

- 0,1 - 0,6 MPa

### Rate of flow

- 18 l/min (inf. data)

### Water inlet

- vnější závit G 1/2"

### Water outlet

- inlet fitting with a rubber sealing

Illustrative photo:



SLA 11



SLA 11A



SLA 11B



SLA 11C

## Supply Specification

- SLP 99S - Supply No. 21992 radar flushing unit including Bluetooth module on the mounting rail, electromagnetic valve, connecting hoses, angle valve with filter and check valve, inlet fitting with a rubber sealing, siphon, paper drill template, power supply (SLP 99Z)
- SLP 99Z - Supply No. 21994

Radar Urinal Flushing Units

## Recommended Accessories

SLZ 01Y	-	Supply No. 05012	power supply 24 V DC for operating of max. 5 pcs. of flushing units
SLZ 01Z	-	Supply No. 05011	power supply 24 V DC for operating of max. 9 pcs. of flushing units
SLZ 04Y	-	Supply No. 05042	power supply 24 V DC on DIN rail, for operating of max. 5 pcs. of flushing units
SLZ 04Z	-	Supply No. 05041	power supply 24 V DC on DIN rail, for operating of max. 9 pcs. of flushing units
SLZ 04X	-	Supply No. 10049	power supply 24 V DC on DIN rail, for operating of max. 15 pcs. of flushing units
SLZ 06	-	Supply No. 05060	power supply 24 V DC for operating of max. 1 pc. of flushing unit
SLD 04	-	Supply No. 07040	remote control for an adjustment of parameters
SLA 11	-	Supply No. 06110	deodorising urinal screen - orange colour, mango scent
SLA 11A	-	Supply No. 06111	deodorising urinal screen - red colour, kiwi and grapefruit scent
SLA 11B	-	Supply No. 06112	deodorising urinal screen - transparent colour, honeysuckle scent
SLA 11C	-	Supply No. 06113	deodorising urinal screen - blue colour, cotton bloom scent
SLR 09	-	Supply No. 08090	mounting frame for ceramic urinals with built-in flush or for ceramic washbasins
SANELA CONTROL APP			available for download on the App Store and Play Store