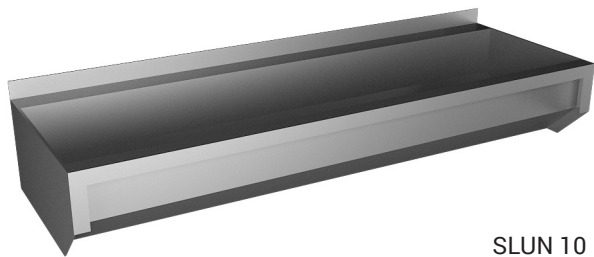


Stainless Steel Washing Troughs

SLUN 10, SLUN 10L, SLUN 10C, SLUN 10D, SLUN 10F

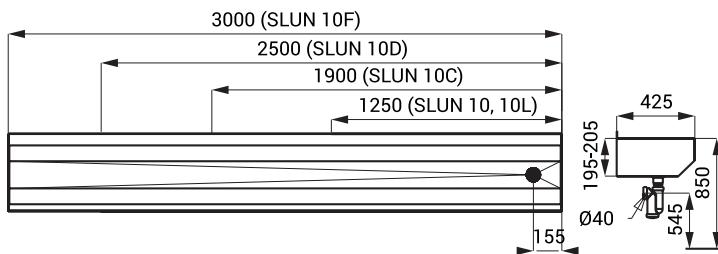


SLUN 10

Characteristics

- stainless steel wall hung washing trough without apron
- without a tap holes (could be made to order)
- siphon hole is standardly on the right side (could be changed to order)
- different lengths could be made to order
- material stainless steel AISI 304 (1.4301)
- material AISI - 316L (SLUN 10L)
- brushed finish

Dimensions



Technical Specification

Dimensions

- | | |
|------------|---------------------|
| ▪ SLUN 10 | 1250 x 425 x 205 mm |
| ▪ SLUN 10L | 1250 x 425 x 205 mm |
| ▪ SLUN 10C | 1900 x 425 x 205 mm |
| ▪ SLUN 10D | 2500 x 425 x 205 mm |
| ▪ SLUN 10F | 3000 x 425 x 205 mm |

Weight

- | | |
|------------|---------|
| ▪ SLUN 10 | 13 kg |
| ▪ SLUN 10L | 13 kg |
| ▪ SLUN 10C | 18 kg |
| ▪ SLUN 10D | 23,4 kg |
| ▪ SLUN 10F | 26,8 kg |

Thickness of material

- | | |
|-------------|--------|
| ▪ trough | 1,2 mm |
| ▪ sidewalls | 2 mm |

Supply Specification

SLUN 10 - Supply No. 93100	stainless steel washing trough 1250 mm, siphon, mounting set
SLUN 10L - Supply No. 73103	stainless steel washing trough 1250 mm, siphon, mounting set
SLUN 10C - Supply No. 93101	stainless steel washing trough 1900 mm, siphon, mounting set, 1 pc. of bracket
SLUN 10D - Supply No. 93102	stainless steel washing trough 2500 mm, siphon, mounting set, 2 pcs. of brackets
SLUN 10F - Supply No. 93103	stainless steel washing trough 3000 mm, siphon, mounting set, 2 pcs. of brackets

Recommended Accessories

SLZN 81 - Supply No. 85810	supportive stainless steel bracket for longer or atypical troughs
SLZN 81L - Supply No. 85811	supportive stainless steel bracket for longer or atypical troughs