

Automatic Washbasin Taps SLU 08LN, SLU 08LND



SANELA 
we make water cool®



SLU 08LND



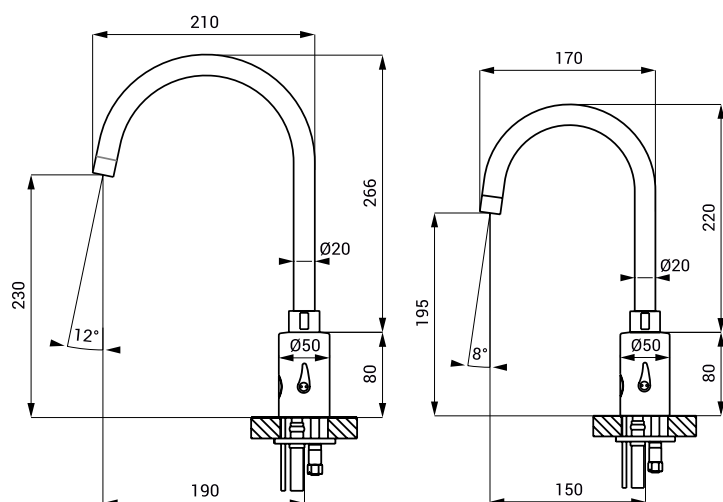
SLU 08LN

Characteristics



- includes Bluetooth control
(paid Sanela Control app available for download)
- economical aerator, rate of flow 6 l/min
- hygienic flush
- suitable for medical facilities
- swivel faucet
- index „D“ - higher faucet
- are destined for cold and hot water, temperature is regulated by mixer
- water is flowing as long as hands are in the active range
- water stops flowing after removal of hands from the active range of sensor after adjustable time delay (can be set in range 0,25 – 7,75 s)
- function of automatic water stop after 5 minut of continuous flow
- monitoring of battery capacity (for models with index B)
- START/STOP program
- parameter setting and communication with the electronics via the Sanela Control app (Bluetooth) or the SLD 03

Dimensions



SLU 08LND

SLU 08LN

Technical Specification

Operating voltage

- SLU 08LN, 08LND 24 V DC
- SLU 08LNB, 08LNDB 6V

Power input

- operating by 24 V DC 14 W
- operating by 6 V 6 W

Battery life

- 4 pcs. AA alkaline batteries approx. 2 years
AA, 1,5 V, 2700 mAh (100 uses per day)

Active range

- standard 0,2 - 0,26 m
- START/STOP program 0,05 - 0,15 m

Recommended flow pressure

- 0,1 - 0,6 MPa

Rate of flow

- 13 l/min. or 6 l/min.
(inf. data)

Water inlet

- male thread G 1/2"

Supply Specification

- | | | |
|------------|--------------------|---------------------------------------------------------------------------------------|
| SLU 08LN | - Supply No. 13181 | faucet with mixer and electronics and solenoid valve, coupling hoses, |
| SLU 08LNB | - Supply No. 13086 | angle valve with filter and check valve (2 pcs.), aerator 6 l/min, 4 pcs. AA alkaline |
| SLU 08LND | - Supply No. 13183 | batteries 1,5 V, 2700 mAh with battery case (for models with index B) |
| SLU 08LNDB | - Supply No. 13088 | |

Recommended Accessories

- | | | |
|--------------------|--------------------|-----------------------------------------------------------------------------------|
| SLZ 01Y | - Supply No. 05012 | power supply 24 V DC for operating of max. 2 pcs. of washbasin taps |
| SLZ 01Z | - Supply No. 05011 | power supply 24 V DC for operating of max. 4 pcs. of washbasin taps |
| SLZ 04Y | - Supply No. 05042 | power supply 24 V DC for DIN rail, for operating of max. 2 pcs. of washbasin taps |
| SLZ 04Z | - Supply No. 05041 | power supply 24 V DC for DIN rail, for operating of max. 4 pcs. of washbasin taps |
| SLZ 04X | - Supply No. 10049 | power supply 24 V DC for DIN rail, for operating of max. 7 pcs. of washbasin taps |
| SLZ 06 | - Supply No. 05060 | power supply 24 V DC for operating of max. 1 pc. of washbasin tap |
| SLD 03 | - Supply No. 07030 | remote control for an adjustment of parameters |
| SLA 36 | - Supply No. 06360 | set of 4 pcs. alkaline batteries AA, 1,5 V, 2700 mAh (for models with index B) |
| SANELA CONTROL APP | | paid Sanela Control app available for download on the App Store and Google Play |