

SLZN 68	95680	Stainless steel hanger, polished finish
SLZN 68N	95681	Stainless steel hanger, black matt finish

- dimensions 45 x 16 x 16 mm
- weight 0,4 kg
- mounting set



SLZD 03	62030	Stainless steel hanger, polished finish
SLZD 03N	62031	Stainless steel hanger, black matt finish

- dimensions 55 x 55 x 60 mm
- weight 0,11 kg
- mounting set



SLZD 02	62020	Stainless steel hanger, polished finish
SLZD 02N	62021	Stainless steel hanger, black matt finish

- dimensions 55 x 55 x 54 mm
- weight 0,12 kg
- mounting set



SLZD 01	62010	Stainless steel hanger with two hooks, polished finish
SLZD 01N	62011	Stainless steel hanger with two hooks, black matt finish

- dimensions 55 x 55 x 54 mm
- weight 0,12 kg
- mounting set



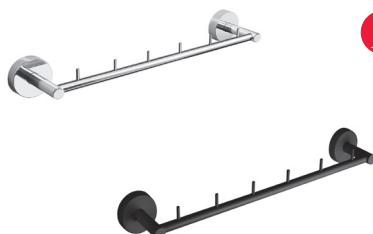
SLZD 04	62040	Stainless steel hanger with two hooks, polished finish
SLZD 04N	62041	Stainless steel hanger with two hooks, black matt finish

- dimensions 82 x 55 x 55 mm
- weight 0,16 kg
- mounting set



SLZN 38	62380	Stainless steel hanger with four hooks, polished finish
SLZN 38N	62381	Stainless steel hanger with four hooks, black matt finish

- dimensions 340 x 58 x 55 mm
- weight 0,24 kg
- mounting set



SLZD 39	62390	Stainless steel hanger with six hooks, polished finish
SLZD 39N	62391	Stainless steel hanger with six hooks, black matt finish

- dimensions 480 x 58 x 55 mm
- weight 0,3 kg
- mounting set



3M



SLZD 23	62230	Stainless steel holder of toilet paper, polished finish
SLZD 23N	62231	Stainless steel holder of toilet paper, black matt finish

- dimensions 139 x 77 x 55 mm
- weight 0,16 kg
- mounting set



3M



SLZD 20	62200	Stainless steel holder of toilet paper, polished finish
SLZD 20N	62201	Stainless steel holder of toilet paper, black matt finish

- dimensions 142 x 79 x 55 mm
- weight 0,17 kg
- mounting set



3M



SLZD 21	62210	Stainless steel double holder of toilet paper, polished finish
SLZD 21N	62211	Stainless steel double holder of toilet paper, black matt finish

- dimensions 229 x 79 x 55 mm
- weight 0,24 kg
- mounting set

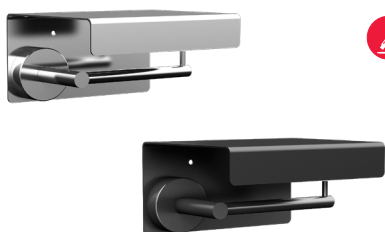


3M



SLZN 09	95090	Stainless steel holder of toilet paper, polished finish
SLZN 09N	95091	Stainless steel holder of toilet paper, black matt finish

- dimensions 140 x 120 x 55 mm
- weight 0,16 kg
- mounting set



3M



SLZD 22	62220	Stainless steel holder of toilet paper with shelf, polished finish
SLZD 22N	62221	Stainless steel holder of toilet paper with shelf, black matt finish

- dimensions 165 x 134 x 91 mm
- weight 0,5 kg
- max. size of coil Ø 125 mm
- mounting set



SLZD 05	62050	Stainless steel towel ring, polished finish
SLZD 05N	62051	Stainless steel towel ring, black matt finish

- circular
- dimensions 194 x 170 x 54 mm
- weight 0,19 kg
- mounting set



SLZD 06	62060	Stainless steel towel ring, polished finish
SLZD 06N	62061	Stainless steel towel ring, black matt finish

- dimensions 182 x 170 x 54 mm
- weight 0,28 kg
- mounting set



SLZD 07	62070	Stainless steel towel bar, polished finish
SLZD 07N	62071	Stainless steel towel bar, black matt finish

- dimensions 412 x 77 x 55 mm
- weight 0,3 kg
- mounting set



SLZD 08	62080	Stainless steel towel bar, polished finish
SLZD 08N	62081	Stainless steel towel bar, black matt finish

- dimensions 500 x 77 x 55 mm
- weight 0,34 kg
- mounting set



SLZD 10	62100	Stainless steel double towel bar, polished finish
SLZD 10N	62101	Stainless steel double towel bar, black matt finish

- dimensions 500 x 115 x 55 mm
- weight 0,49 kg
- mounting set



SLZD 11	62110	Stainless steel double towel bar, polished finish
SLZD 11N	62111	Stainless steel double towel bar, black matt finish

- dimensions 600 x 115 x 55 mm
- weight 0,55 kg
- mounting set



SLZD 34
SLZD 34N

62340
62341

Stainless steel towel rack, polished finish
Stainless steel towel rack, black matt finish



- dimensions 514 x 250 x 55 mm
- weight 0,7 kg
- mounting set



SLZD 35
SLZD 35N

62350
62351

Stainless steel towel rack, polished finish
Stainless steel towel rack, black matt finish



- dimensions 630 x 250 x 55 mm
- weight 0,76 kg
- mounting set



SLZD 36
SLZD 36N

62360
62361

Stainless steel towel rack with rail,
polished finish
Stainless steel towel rack with rail,
black matt finish



- dimensions 514 x 250 x 92 mm
- weight 0,84 kg
- mounting set



SLZD 37
SLZD 37N

62370
62371

Stainless steel towel rack with rail,
polished finish
Stainless steel towel rack with rail,
black matt finish



- dimensions 630 x 250 x 92 mm
- weight 0,94 kg
- mounting set



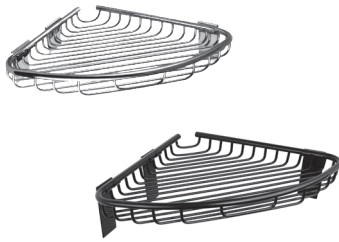
SLZD 18	62180	Stainless steel shelf / soup holder, polished finish
SLZD 18N	62181	Stainless steel shelf / soup holder, black matt finish

- dimensions 147 x 138 x 55 mm
- weight 0,26 kg
- mounting set



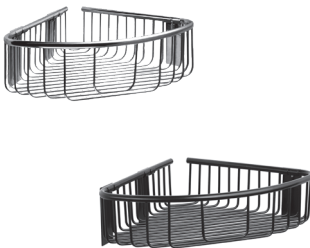
SLZD 19	62190	Stainless steel shelf / soup holder, polished finish
SLZD 19N	62191	Stainless steel shelf / soup holder, black matt finish

- dimensions 230 x 147 x 55 mm
- weight 0,35 kg
- mounting set



SLZD 25	62250	Stainless steel corner shelf, polished finish
SLZD 25N	62251	Stainless steel corner shelf, black matt finish

- dimensions 218 x 218 x 77 mm
- weight 0,48 kg
- mounting set



SLZD 26	62260	Stainless steel corner shelf, polished finish
SLZD 26N	62261	Stainless steel corner shelf, black matt finish

- dimensions 218 x 218 x 77 mm
- weight 0,58 kg
- mounting set



SLZD 28	62280	Stainless steel double corner shelf, polished finish
SLZD 28N	62281	Stainless steel double corner shelf, black matt finish

- dimensions 318 x 218 x 218 mm
- weight 1,02 kg
- mounting set



SLZD 29	62290	Stainless steel double corner shelf, polished finish
SLZD 29N	62291	Stainless steel double corner shelf, black matt finish

- dimensions 283 x 218 x 218 mm
- weight 0,94 kg
- mounting set



3M



SLZD 12
SLZD 12N

62120
62121

Stainless steel glass holder, polished finish
Stainless steel glass holder, black matt finish

- dimensions 119 x 68 x 97 mm
- weight 0,33 kg
- mounting set



3M



SLZD 15
SLZD 15N

62150
62151

Stainless steel double glass holder, polished finish
Stainless steel double glass holder, black matt finish

- dimensions 206 x 100 x 98 mm
- weight 0,64 kg
- mounting set



3M



SLZD 13
SLZD 13N

62130
62131

Stainless steel/glass soap holder, polished finish
Stainless steel/glass soap holder, black matt finish

- dimensions 141 x 112 x 55 mm
- weight 0,31 kg
- mounting set



3M



SLZD 17
SLZD 17N

62170
62171

Stainless steel holder for glass and soap, polished finish
Stainless steel holder for glass and soap, black matt finish

- dimensions 229 x 123 x 98 mm
- weight 0,62 kg
- mounting set



3M



SLZD 14
SLZD 14N

62140
62141

Stainless steel glass soap dispenser, polished finish
Stainless steel glass soap dispenser, black matt finish

- dimensions 160 x 127 x 71 mm
- weight 0,37 kg
- mounting set
- volume 150 ml



3M



SLZD 24
SLZD 24N

62240
62241

Stainless steel toilet brush with glass, polished finish
Stainless steel toilet brush with glass, black matt finish

- dimensions 350 x 160 x 116 mm
- weight 0,58 kg
- mounting set
- toilet brush colour - black



SLZD 30	62300	Stainless steel toilet brush, polished finish
SLZD 30N	62301	Stainless steel toilet brush, black matt finish

- floor standing
- dimensions 400 x Ø 89 x 89 mm
- weight 0,8 kg
- toilet brush colour - black



SLZD 31	62310	Stainless steel toilet brush, polished finish
SLZD 31X	62314	Stainless steel toilet brush, brushed finish
SLZD 31N	62311	Stainless steel toilet brush, black matt finish

- wall mounted
- dimensions 400 x Ø 96 x 89 mm
- weight 0,84 kg
- mounting set
- toilet brush colour - black



SLZD 33	62330	Stainless steel bath handle, polished finish
SLZD 33N	62331	Stainless steel bath handle, black matt finish

- dimensions 353 x 78 x 55 mm
- weight 0,32 kg
- mounting set

Recommended Accessories

SLA 59 - Supply No. 06590

special impregnation to increase the adhesion of 3M VHB tape



TAPE 3M VHB

- installation without drilling, using 3M VHB (very high bond) double - sided adhesive tape for perfect fixation



IMPREGNATION 3M

- installation without drilling, using 3M VHB (very high bond) double - sided adhesive tape for perfect fixation
- for products with higher loads, the use of special impregnation is recommended to increase the adhesion of 3M VHB tape



MOUNTING SET

- installation using mounting set