

Stainless Steel Washbasin SLUN 59

Technical sheet



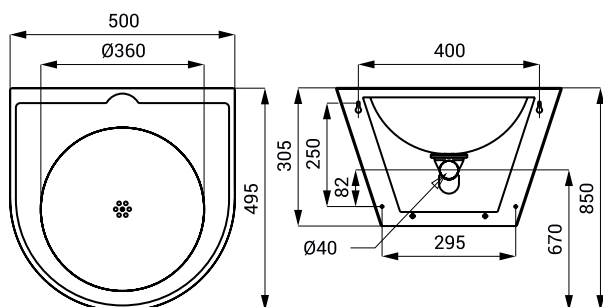
SLUN 59

Characteristics



- vandal-proof
- suitable for a prison
- stainless steel wall hung washbasin
- mounting over servis hole and special screws
- without a tap hole (could be made to order)
- material AISI - 304
- brushed

Dimensions



Technical Specification

Dimensions	500 x 305 x 495 mm
Weight	6,02 kg
Thickness of material	1,2/1 mm

Supply Specification

SLUN 59 - Supply No. 93590 stainless steel washbasin, siphon, mounting set