

Ceramic Urinal with the Radar Flushing Unit SLP 19S



SANELA 
we make water cool®



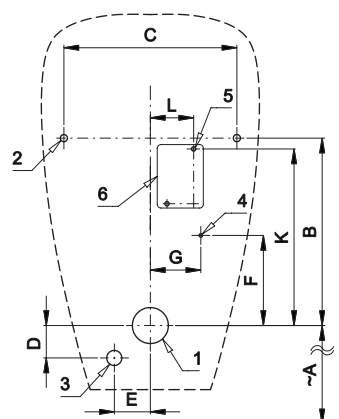
SLP 19 - GOLEM

Characteristics



- includes Bluetooth control (Sanela Control app available for download)
- economy flushing by 1 liter of water
- easy installation
- whole flushing unit is placed behind the urinal
- system reacts only on the direct use of the urinal (it analyses changes, which are proceeded inside of the urinal, when a liquid is flowing through)
- adjustable flushing time 0,5 to 15,5 s
- parameter setting and communication with the electronics via the Sanela Control app (Bluetooth) or the SLD 04 remote control (acoustic indication of setting) without dismantling the urinal
- automatic flushing after each 6 hours non-use
- monitoring of battery capacity (for models with index B)
- possibility to regulate a water flow by the angle valve
- radar flushing unit recharges a water to the siphon after each flushing

Installation Drawing



- 1 - water outlet Ø 50 mm
- 2 - holes for fitting
- 3 - water supply
- 4 - power supply 24 V DC or 230 V AC
- 5 - holes for wall plug
- 6 - power supply

SLP 19

Dimensions (mm)	A	B	C	D	E	F	G	K	L
SLP 19 - GOLEM	400	260	240	45	50	125	70	245	60

* for the height of the front edge of the urinal 650 mm above the floor

Technical Specification

Operating voltage

- SLP 19S 24 V DC
- SLP 19Z 230 V AC/50 Hz
- SLP 19B 6 V

Power input

- operating by 24 V DC 8 W
- operating by 6 V 3 W

Recommended flow pressure

0,1 - 0,6 MPa

Rate of flow

18 l/min (inf. data)

Water inlet

male thread G 1/2"

Water outlet

inlet fitting with a rubber sealing



SLA 11



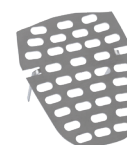
SLA 11A



SLA 11B



SLA 11C



SLA 26

Supply Specification

- SLP 19S - Supply No. 01196 ceramic urinal with radar flush including Bluetooth module, electromagnetic valve,
- SLP 19Z - Supply No. 01197 connecting hoses, angle valve with filter and check valve, inlet fitting with a rubber
- SLP 19B - Supply No. 21195 sealing, siphon, mounting set, paper drill template, power supply (SLP 19Z), 4 pcs. AA alkaline batteries 1,5 V, 2700 mAh with battery case (SLP 19B)

Recommended Accessories

SLZ 01Y	- Supply No. 05012	power supply 24 V DC for operating of max. 5 pcs. of flushing units
SLZ 01Z	- Supply No. 05011	power supply 24 V DC for operating of max. 9 pcs. of flushing units
SLZ 04Y	- Supply No. 05042	power supply 24 V DC on DIN rail, for operating of max. 5 pcs. of flushing units
SLZ 04Z	- Supply No. 05041	power supply 24 V DC on DIN rail, for operating of max. 9 pcs. of flushing units
SLZ 04X	- Supply No. 10049	power supply 24 V DC on DIN rail, for operating of max. 15 pcs. of flushing units
SLZ 06	- Supply No. 05060	power supply 24 V DC for operating of max. 1 pc. of flushing unit
SLD 04	- Supply No. 07040	remote control for an adjustment of parameters
SLA 11	- Supply No. 06110	deodorising urinal screen - orange, mango scent
SLA 11A	- Supply No. 06111	deodorising urinal screen - red, kiwi and grapefruit scen
SLA 11B	- Supply No. 06112	deodorising urinal screen - transparent, honeysuckle scent
SLA 11C	- Supply No. 06113	deodorising urinal screen - blue, cotton bloom scent
SLA 26	- Supply No. 06260	stainless steel sieve for urinals Golem and Caprino plus rimless
SLR 09	- Supply No. 08090	mounting frame for ceramic urinals with built-in flush or for ceramic washbasins
SLA 36	- Supply No. 06360	set of 4 pcs. alkaline batteries AA 1,5 V, 2700 mAh (for models with index B)
SANELA CONTROL APP		available for download on the App Store and Play Store