

Vandal-proof Stainless Steel Toilets

SLWN 05, SLWN 06, SLWN 09



Characteristics:

- **vandal-proof**
- **designed for prisons**
- floor standing conical stainless steel toilet fixed to the wall
- rear assembling by M10 screws (length 190 mm) from the service room
- material CrNi 18/10 (AISI - 304), thickness 1,2 mm
- filled with expanded polyurethane (to avoid dents and typical metal noise)
- brushed finish

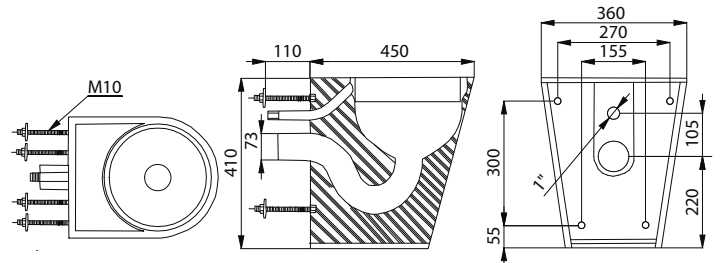


SLWN 05

Supply Specification:

SLWN 05 – supply No. 94050 stainless steel toilet; M10 screws

Dimensions:



Characteristics:

- **vandal-proof**
- **designed for prisons**
- floor standing straight stainless steel toilet fixed to the wall
- rear assembling by M10 screws (length 190 mm) from the service room
- material CrNi 18/10 (AISI - 304), thickness 1,2 mm
- filled with expanded polyurethane (to avoid dents and typical metal noise)
- brushed finish

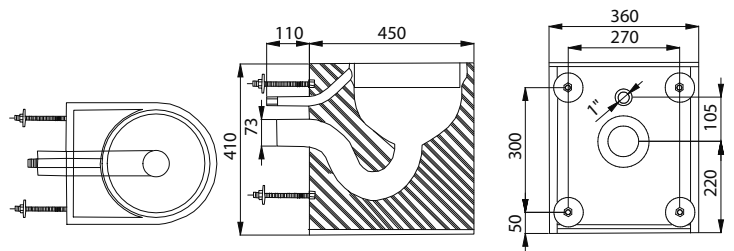


SLWN 06

Supply Specification:

SLWN 06 – supply No. 94060 stainless steel toilet; M10 screws

Dimensions:



Characteristics:

EN 997

- **vandal-proof**
- stainless steel wall hung conical toilet
- with blind cover seat holes
- assembling by mounting plate
- material CrNi 18/10 (AISI - 304), thickness 1,5 mm
- brushed finish

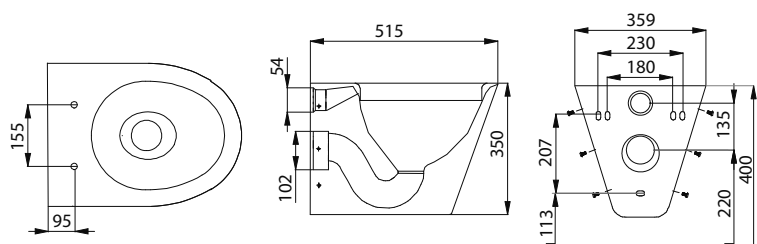


SLWN 09

Supply Specification:

SLWN 09 – supply No. 94090 stainless steel toilet with mounting plate (without toilet cover seat)

Dimensions:



Recommended Accessories:

SLZN 31 – supply No. 95310 black toilet cover seat

Vandal-proof Stainless Steel Toilet