

# Stainless Steel Washing Troughs SLUN 10, SLUN 10P, SLUN 10K

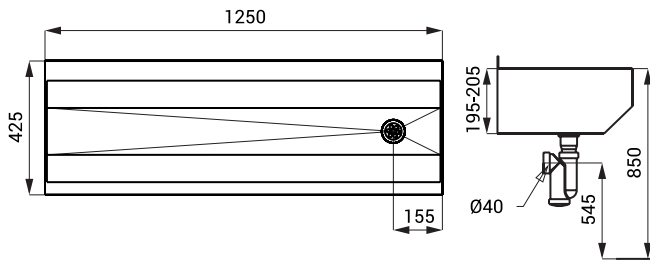


SLUN 10

## Characteristics

- stainless steel wall hung washing trough without a sheating
- without a tap holes (could be made to order)
- siphon hole is standardly on the right side (could be changed to order)
- different lengths could be made to order
- material AISI - 304 (SLUN 10)
- material AISI - 316L (SLUN 10L)
- brushed finish

## Dimensions

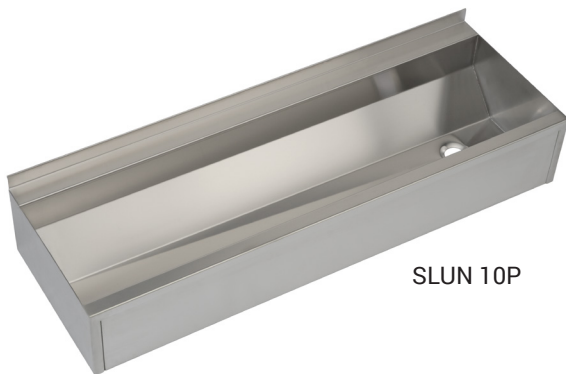


## Supply Specification

SLUN 10 - Supply No. 93100 stainless steel washing trough, siphon, mounting set  
SLUN 10L - Supply No. 73103

## Recommended Accessories

SLZN 81 - Supply No. 85810 supportive stainless steel bracket for longer or atypical troughs  
SLZN 81L - Supply No. 85811 supportive stainless steel bracket for longer or atypical troughs

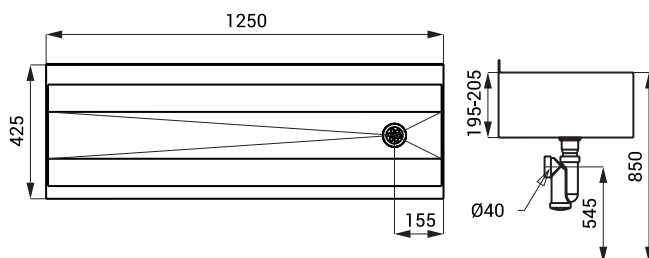


SLUN 10P

## Characteristics

- stainless steel wall hung washing trough with a sheating
- without a tap holes (could be made to order)
- siphon hole is standardly on the right side (could be changed to order)
- different lengths could be made to order
- material AISI - 304 (SLUN 10P)
- material AISI - 316L (SLUN 10PL)
- brushed finish

## Dimensions

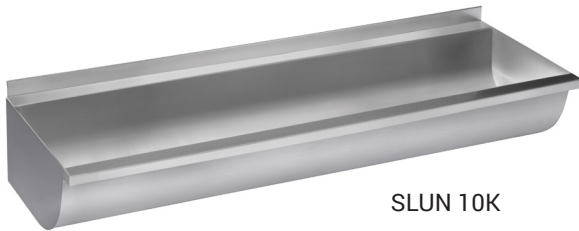


## Supply Specification

SLUN 10P - Supply No. 93107 stainless steel washing trough, siphon, mounting set  
SLUN 10PL - Supply No. 73104

## Recommended Accessories

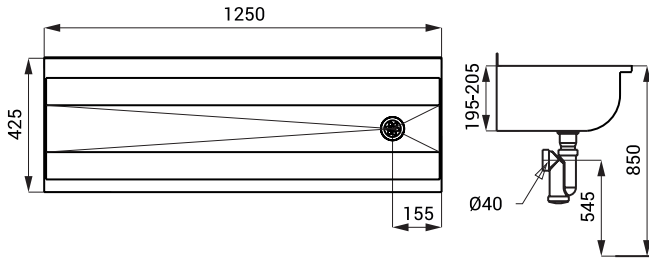
SLZN 81 - Supply No. 85810 supportive stainless steel bracket for longer or atypical troughs  
SLZN 81L - Supply No. 85811 supportive stainless steel bracket for longer or atypical troughs



## Characteristics

- stainless steel wall hung washing trough without a sheating
- without a tap holes (could be made to order)
- siphon hole is standardly on the right side (could be changed to order)
- different lengths could be made to order (max. 1500 mm)
- material AISI - 304 (SLUN 10K)
- material AISI - 316L (SLUN 10KL)
- brushed finish

## Dimensions



## Supply Specification

SLUN 10K - Supply No. 93109 stainless steel washing trough, siphon, mounting set  
SLUN 10KL - Supply No. 73105

## Recommended Accessories

SLZN 81 - Supply No. 85810 supportive stainless steel bracket for longer or atypical troughs  
SLZN 81L - Supply No. 85811 supportive stainless steel bracket for longer or atypical troughs