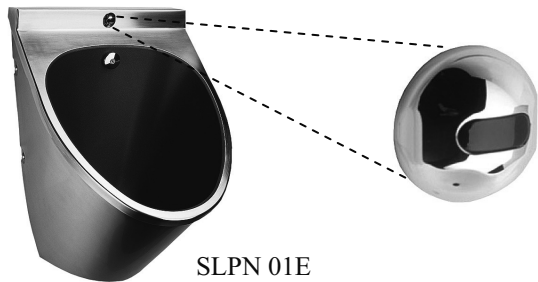
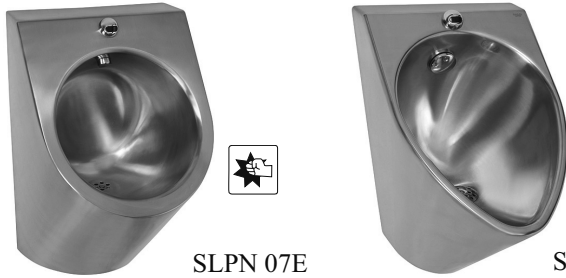


Stainless Steel Automatic Urinals

SLPN 01, SLPN 07, SLPN 08



SLPN 01E



SLPN 07E

SLPN 08E

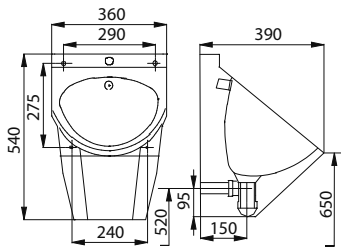
Characteristics:

- stainless steel wall hung urinals
- SLPN 01 - teflon surface of inner side of urinal
- SLPN 07 - assembling through service door on the bottom side of urinal
- material CrNi 18/10 (AISI - 304)
- brushed finish (SLPN 01, SLPN 07), softly polished finish (SLPN 08)
- SLPN xxE, EB - system reacts to the user attendance in front of the urinal at a maximum distance of 0,7 m, minimum stay time in active range is 7,5 sec.
- water flows after leaving active range
- adjustable flushing time from 0,5 to 15,5 seconds
- automatic hygiene flushing after 24 hours non-use

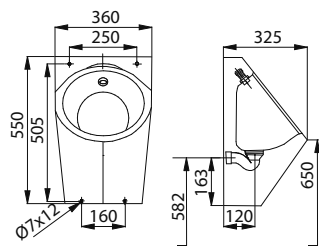
Technical Specification:

Operating voltage	24V DC external
- SLPN 01E, 07E, 08E	9V
- SLPN 01EB, 07EB, 08EB	0,3 - 0,7 m
Active range	0,1 - 0,6 MPa
Recommended flow pressure	12 l/min. (inf. data)
Rate of flow	male thread G 1/2"
Water inlet	

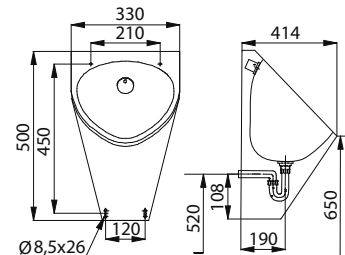
Dimensions:



SLPN 01



SLPN 07



SLPN 08

Supply Specification:

SLPN 01	- supply No. 91010	stainless steel urinals with a flushing head; siphon; mounting set
SLPN 07	- supply No. 91070	
SLPN 08	- supply No. 91080	
SLPN 01E	- supply No. 91011	stainless steel urinal with a flushing head; electronics; electromagnetic valve (1 pc.);
SLPN 07E	- supply No. 91071	connecting hose, angle valve with a filter and non-return valve (1 pc.); siphon; lithium battery
SLPN 08E	- supply No. 91081	SLA 09 (only for models with „B“ index); mounting set
SLPN 01EB	- supply No. 91012	
SLPN 07EB	- supply No. 91072	
SLPN 08EB	- supply No. 91082	

Recommended Accessories:

SLZ 01Y	- supply No. 05012	external power supply 230/24V DC for operating of max. 5 pcs. of flushing units (see page 118)
SLZ 01Z	- supply No. 05011	external power supply 230/24V DC for operating of max. 9 pcs. of flushing units (page 118)
SLZ 06	- supply No. 05060	external power supply 230/24V DC, for operating of max. 1 pc. of flushing unit (see page 118)
SLD 03	- supply No. 07030	universal remote control for an adjustment of parameters of all products with infra-red electronics (see page 115)
SLA 09	- supply No. 06090	lithium battery 9V/1200 mAh, type U9VL, battery life approx. 2 years at 100 uses per day (only for models with “B” index) (see page 115)
SLR 02N	- supply No. 08021	mounting frame to the plasterboard for stainless steel urinals (see page 116)