

# Stainless Steel Urinal Mangers

## SLPN 02, SLPN 03, SLPN 04, SLPN 05



SLPN 02



SLPN 05

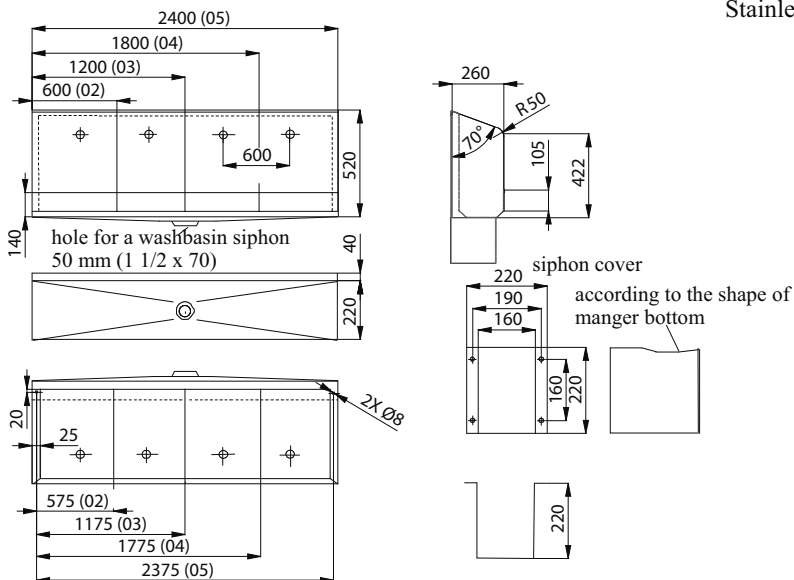
### Characteristics: NEW

- **vandal-proof**
- stainless steel wall hung urinal mangers
- mangers are delivered in the lengths 600, 1200, 1800 and 2400 mm
- different number of flushing heads according to the each model of manger
- **different lengths could be made to order**
- material CrNi 18/10 (AISI-304)
- brushed finish

### Technical Specification:

Recommended flow pressure	0,1 - 0,6 MPa
Rate of flow	12 l/min. (inf. data)
Water inlet	male thread G 1/2"
Stainless steel thickness	1,5 mm

### Dimensions:



### Supply Specification:

<b>SLPN 02</b>	- <b>supply No. 91020</b>	stainless steel urinal manger 600 mm with 1 flushing head; angle valve (1 pc.); mounting set; cover for siphon; siphon
<b>SLPN 03</b>	- <b>supply No. 91030</b>	stainless steel urinal manger 1200 mm with 2 flushing heads; angle valve (1 pc.); mounting set; cover for siphon; siphon
<b>SLPN 04</b>	- <b>supply No. 91040</b>	stainless steel urinal manger 1800 mm with 3 flushing heads; angle valve (1 pc.); mounting set; cover for siphon; siphon
<b>SLPN 05</b>	- <b>supply No. 91050</b>	stainless steel urinal manger 2400 mm with 4 flushing heads; angle valve (1 pc.); mounting set; cover for siphon; siphon

### Recommended Accessories:

<b>SLD 04</b>	- <b>supply No. 07040</b>	universal remote control for an adjustment of parameters (see page 115)
<b>SLP 01Z</b>	- <b>supply No. 01011</b>	time-controlled flushing unit (see page 43)



SLP 01Z