

# Ceramic Urinal with the Radar Flushing Unit SLP 32R



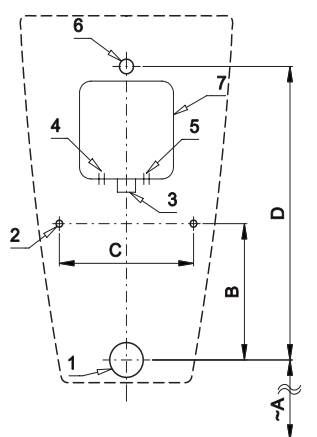
SLP 32 - ARQ WITH A COVER

## Characteristics



- includes Bluetooth control (Sanela Control app available for download)
- easy installation
- whole flushing unit is placed behind the urinal
- system reacts only on the direct use of the urinal (it analyses changes, which are proceeded inside of the urinal, when a liquid is flowing through)
- adjustable flushing time 0,5 - 15,5 s
- parameter setting and communication with the electronics via the Sanela Control app (Bluetooth) or the SLD 04 remote control (acoustic indication of setting) without dismantling the urinal
- automatic flushing after each 6 hours non-use
- possibility to regulate a water flow by the angle valve
- radar flushing unit recharges a water to the siphon after each flushing

## Installation Drawing



- 1 - water outlet  $\varnothing$  50 mm
- 2 - holes for fitting
- 3 - water supply
- 4 - power supply 230 V AC (SLP 32RZ)
- 5 - power supply 24 V DC (SLP 32R)
- 6 - inlet fitting
- 7 - mounting box

SLP 32R

Dimensions (mm)	A	B	C	D
SLP 32 - ARQ	390	195	200	420

\* for the height of the front edge of the urinal 650 mm above the floor

## Technical Specification

<b>Mounting box dimension</b>	140 x 140 x 75 mm
<b>Operating voltage</b>	
▪ SLP 32R	24 V DC
▪ SLP 32RZ	230 V AC/50 Hz
▪ SLP 32RB	6 V
<b>Power input</b>	
▪ operating by 24 V DC	8 W
▪ operating by 6 V	3 W
<b>Recommended flow pressure</b>	0,1 - 0,6 MPa
<b>Rate of flow</b>	18 l/min (inf. data)
<b>Water inlet</b>	male thread G 3/4"
<b>Water outlet</b>	inlet fitting with a rubber sealing



SLA 11



SLA 11A



SLA 11B



SLA 11C

## Supply Specification

SLP 32R	- Supply No. 01324	ceramic urinal with the radar flushing unit including Bluetooth module, plastic mounting box with brass screw coupling, electromagnetic valve and angle valve,
SLP 32RZ	- Supply No. 01325	inlet fitting with a rubber sealing, power supply (SLP 32RZ), 4 pcs. AA alkaline batteries 1,5 V, 2700 mAh with battery case (SLP 32RB)
SLP 32RB	- Supply No. 11327	

## Recommended Accessories

SLZ 01Y	-	Supply No. 05012	power supply 24 V DC for operating of max. 5 pcs. of flushing units
SLZ 01Z	-	Supply No. 05011	power supply 24 V DC for operating of max. 9 pcs. of flushing units
SLZ 04Y	-	Supply No. 05042	power supply 24 V DC on DIN rail, for operating of max. 5 pcs. of flushing units
SLZ 04Z	-	Supply No. 05041	power supply 24 V DC on DIN rail, for operating of max. 9 pcs. of flushing units
SLZ 04X	-	Supply No. 10049	power supply 24 V DC on DIN rail, for operating of max. 15 pcs. of flushing units
SLZ 06	-	Supply No. 05060	power supply 24 V DC for operating of max. 1 pc. of flushing unit
SLD 04	-	Supply No. 07040	remote control for an adjustment of parameters
SLA 11	-	Supply No. 06110	deodorising urinal screen - orange colour, mango scent
SLA 11A	-	Supply No. 06111	deodorising urinal screen - red colour, kiwi and grapefruit scent
SLA 11B	-	Supply No. 06112	deodorising urinal screen - transparent colour, honeysuckle scent
SLA 11C	-	Supply No. 06113	deodorising urinal screen - blue colour, cotton bloom scent
SLR 01	-	Supply No. 08010	plasterboard frame for urinal with mounting box behind the urinal
SLR 22	-	Supply No. 08220	mounting frame for plasterboard constructions, for mounting to the floor and to the back wall, is destined for ceramic urinals and Sanela stainless steel urinals (SLPN 07, SLPN 09) and infra-red flushing unit, which is placed above the urinal (SLP 02, SLP 06)
SLA 36	-	Supply No. 06360	set of 4 pcs. alkaline batteries AA 1,5 V, 2700 mAh (for models with index B)
SANELA CONTROL APP			available for download on the App Store and Play Store