

Radar Flushing Unit for Urinal Subway SLP 71RS

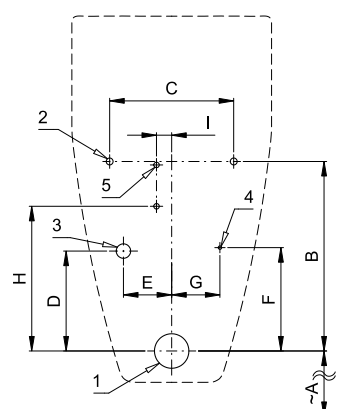


Characteristics



- radar flushing unit for urinal Subway No. 75130, 751301, 751305 (Villeroy & Boch)
- includes Bluetooth control (Sanela Control app available for download)
- economy flushing by 1 liter of water
- during installation is necessary to blind additional inlet holes by silicone plugs (see the mounting instructions)
- easy installation by the help of paper drill template
- whole flushing unit is placed behind the urinal
- system reacts only on the direct use of the urinal (it analyses changes, which are proceeded inside of the urinal, when a liquid is flowing through)
- adjustable flushing time 0,5 - 15,5 s
- parameter setting and communication with the electronics via the Sanela Control app (Bluetooth) or the SLD 04 remote control (acoustic indication of setting) without dismantling the urinal
- automatic flushing after each 6 hours non-use
- monitoring of battery capacity (for models with index B)
- possibility to regulate a water flow by the ball valve
- radar flushing unit recharges a water to the siphon after each flushing

Installation Drawing



- 1 - water outlet \varnothing 50 mm
- 2 - holes for fitting
- 3 - water supply
- 4 - power supply
- 5 - holes for wall plug

Dimensions (mm)	A	B	C	D	E	F	G	H	I
SLP 71 - SUBWAY	405	275	180	145	70	150	70	210	22

* for the height of the front edge of the urinal 650 mm above the floor

Technical Specification

Operating voltage

- SLP 71RS 24 V DC
- SLP 71RZ 230 V AC/50 Hz
- SLP 71RB 6 V

Power input

- operating by 24 V DC 8 W
- operating by 6 V 3 W

Recommended flow pressure

0,1 - 0,6 MPa

Rate of flow

18 l/min (inf. data)

Water inlet

male thread G 1/2"

Water outlet

inlet fitting with a rubber sealing

Illustrative photo:



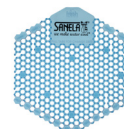
SLA 11



SLA 11A



SLA 11B



SLA 11C

Supply Specification

- SLP 71RS - Supply No. 11715 radar flushing unit including Bluetooth module on the mounting rail, electromagnetic valve, silicone plug (1 pc.), connecting hoses, angle valve with filter and check valve,
- SLP 71RZ - Supply No. 11716 inlet fitting with a rubber sealing, siphon, paper drill template, power supply (SLP 71RZ),
- SLP 71RB - Supply No. 11717 4 pcs. AA alkaline batteries 1,5 V, 2700 mAh with battery case (SLP 71RB)

Recommended Accessories

SLZ 01Y	- Supply No. 05012	power supply 24 V DC for operating of max. 5 pcs. of flushing units
SLZ 01Z	- Supply No. 05011	power supply 24 V DC for operating of max. 9 pcs. of flushing units
SLZ 04Y	- Supply No. 05042	power supply 24 V DC on DIN rail, for operating of max. 5 pcs. of flushing units
SLZ 04Z	- Supply No. 05041	power supply 24 V DC on DIN rail, for operating of max. 9 pcs. of flushing units
SLZ 04X	- Supply No. 10049	power supply 24 V DC on DIN rail, for operating of max. 15 pcs. of flushing units
SLZ 06	- Supply No. 05060	power supply 24 V DC for operating of max. 1 pc. of flushing unit
SLD 04	- Supply No. 07040	remote control for an adjustment of parameters
SLA 11	- Supply No. 06110	deodorising urinal screen - orange colour, mango scent
SLA 11A	- Supply No. 06111	deodorising urinal screen - red colour, kiwi and grapefruit scent
SLA 11B	- Supply No. 06112	deodorising urinal screen - transparent colour, honeysuckle scent
SLA 11C	- Supply No. 06113	deodorising urinal screen - blue colour, cotton bloom scent
SLR 09	- Supply No. 08090	mounting frame for ceramic urinals with built-in flush or for ceramic washbasins
SLA 36	- Supply No. 06360	set of 4 pcs. alkaline batteries AA 1,5 V, 2700 mAh (for models with index B)
SANELA CONTROL APP		available for download on the App Store and Play Store